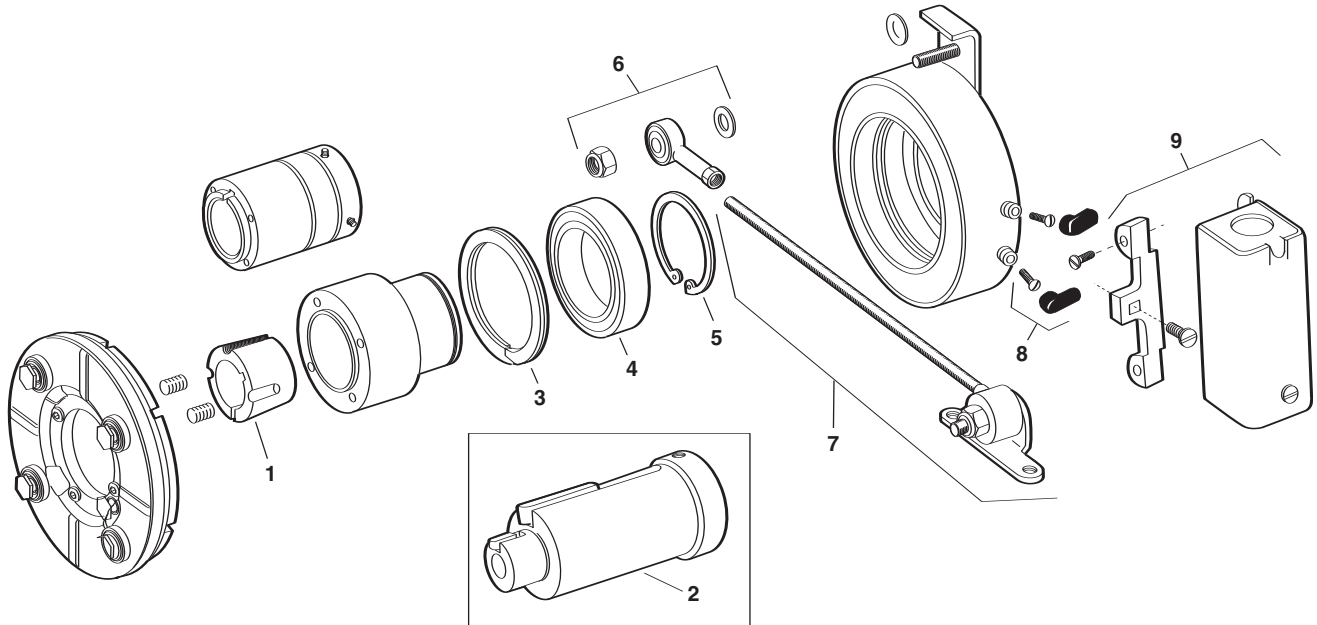


FB-375, FB-475, FB-650



Item	Description	FB-375		FB-475		FB-650	
		Part Number	Qty	Part Number	Qty	Part Number	Qty
Optional Parts							
1	*Bushing	N/A		180-0410 1/2" bore to 180-0418 1" bore	1	180-0421 1/2" bore to 180-0435 1-3/8" bore	1
2	Adapter (optional)		1		1		1
	5/8" motor shaft	5380-101-005					
	7/8" motor shaft	5380-101-004					
	1-1/8" motor shaft			5381-101-003			
	1-3/8" motor shaft					5382-101-003	
	1-5/8" motor shaft					5382-101-002	
Service Parts							
3	Retainer ring	748-0101	1	748-0102	1	748-0104	1
4	Ball bearing	166-0150	1	166-0110	1	166-0104	1
5	Retainer ring	748-0018	1	748-0002	1	748-0004	1
6	Torque arm mount assembly	5380-101-007	1	5381-101-006	1	5382-101-007	1
7	Torque arm rod assembly	5380-112-001	1	5381-112-001	1	5382-112-001	1
8	Terminal accessory	5311-101-001	1	5311-101-001	1	5311-101-001	1
9	Conduit Box	5200-101-010	1	5200-101-010	1	5200-101-010	1

*See page 235 for specific part numbers.

These units, when used with the correct Warner Electric conduit box, meet the standards of UL508 and are listed under guide card #NMTR2, file #59164 and are CSA certified under file #LR11543.

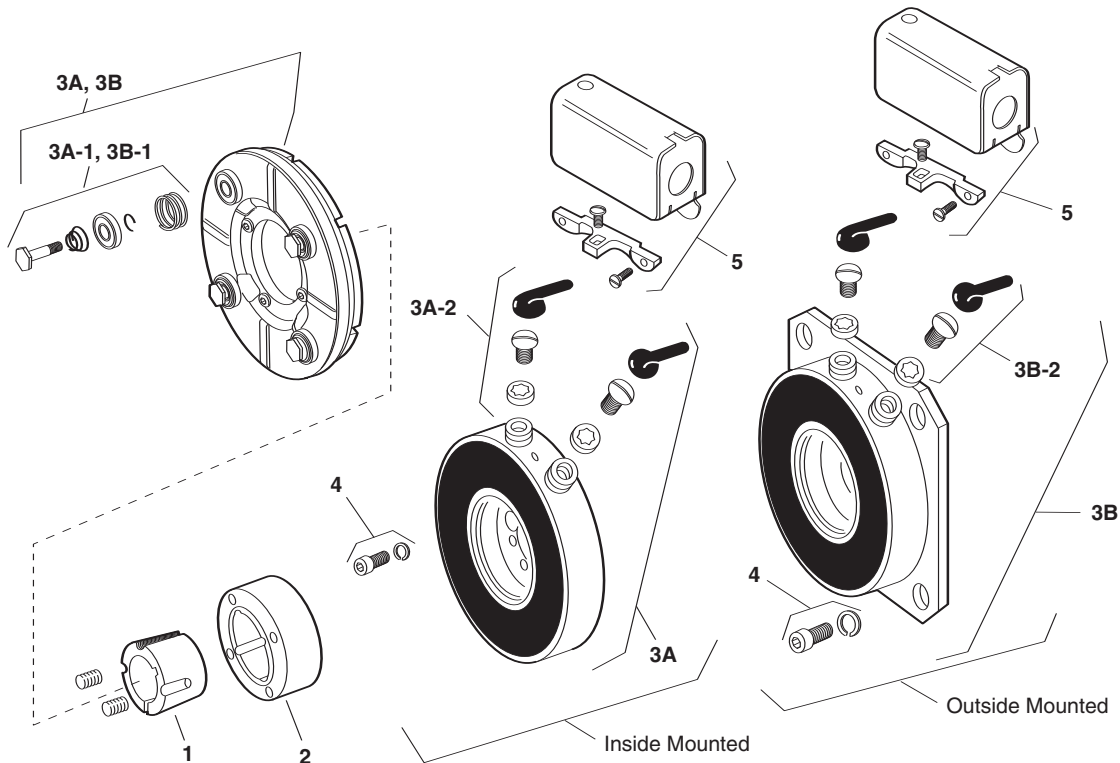
Magnet and armature are not field replaceable.



MEX (55) 53 63 23 31 MTY (81) 83 54 10 18
 QRO (442) 1 95 72 60 ventas@industrialmagza.com

Service Parts

ER-375, ER-475, ER-650



Component Parts

Item	Description	ER-375		ER-475		ER-650	
		Part Number	Qty	Part Number	Qty	Part Number	Qty
1	†Bushing			180-0410-0418 (1/2" to 1" Bore)	1	180-0421-0435 (1/2" to 1-3/8" Bore)	1
2	Hub 1/2" Bore 5/8" Bore	540-0846	1	540-0849	1	540-0848	1
		540-0847	1				
3A	Magnet and Armature (Inside Mounted, 90 Volt) Sold only in matched pairs*			5255-5	1	5256-6	1
3A-1	Autogap Accessory			5391-101-003	4	5392-101-003	4
3A-2	Terminal Accessory			5103-101-002	1	5103-101-002	1
3B	Magnet and Armature (Outside Mounted, 90 Volt) Sold only in matched pairs*	5254-1	1	5255-6	1	5256-7	1
3B-1	Autogap Accessory	5390-101-002	3	5391-101-003	4	5392-101-003	1
3B-2	Terminal Accessory	5103-101-002	1	5103-101-002	1	5103-101-002	1
4	Mounting Accessory Inside Mount Outside Mount			5255-101-001	1	5256-101-003	1
		5254-101-002	1	5255-101-002	1	5256-101-003	1
5	Conduit Box	5200-101-010	1	5200-101-010	1	5200-101-010	1

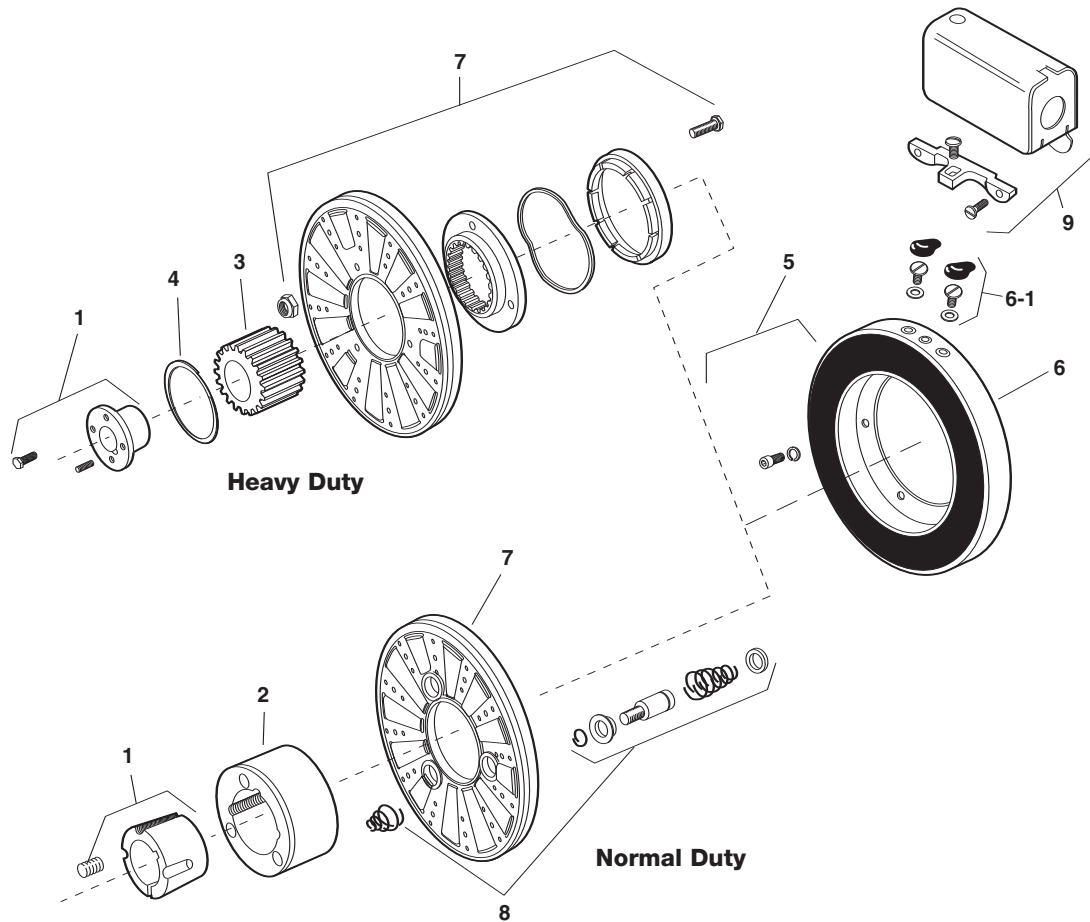
† See page 235 for specific part numbers.

* Magnets and armatures sold only in pre-burnished sets to assure rated torque available upon installation.

These units, when used with the correct Warner Electric conduit box, meet the standards of UL508 and are listed under guide card #NMTR2, file #59164 and are CSA certified under file #LR11543.



MEX (55) 53 63 23 31 MTY (81) 83 54 10 18
 QRO (442) 1 95 72 60 ventas@industrialmagza.com
Service Parts



Component Parts

Item	Description	ER-825 Normal Duty		ER-825 Heavy Duty		ER-1225 Normal Duty		ER-1225 Heavy Duty	
		Part Number	Qty.	Part Number	Qty.	Part Number	Qty.	Part Number	Qty.
1	†Bushing	180-0137-180-0149 7/8" to 1-5/8" Bore	1	180-0008-180-0018 7/8" to 1-1/2" Bore	1	180-0262-180-0295 15/16" to 3" Bore	1	180-0026-180-0057 3/4" to 2-11/16" Bore	1
2	Armature Hub	540-0394	1			540-0015	1		
3	Splined Hub			540-0057	1			540-0064	1
4	Retainer Ring			748-0006	1			748-0005	1
5	Mounting Accessory, I.M.	5321-101-001	1	5321-101-001	1	5321-101-001	1	5321-101-001	1
6 & 7	Magnet (I.M., 90 volt) and Armature sold only in matched pairs*	5250-30	1	5250-25	1	5252-9	1	5252-4	1
6-1	Terminal Accessory	5311-101-001	1	5311-101-001	1	5311-101-001	1	5311-101-001	1
8	Autogap Accessory	5201-101-008	3			5201-101-008	4		
9	Conduit Box	5200-101-010	1	5200-101-010	1	5200-101-010	1	5200-101-010	1

† See page 235 for specific part numbers.

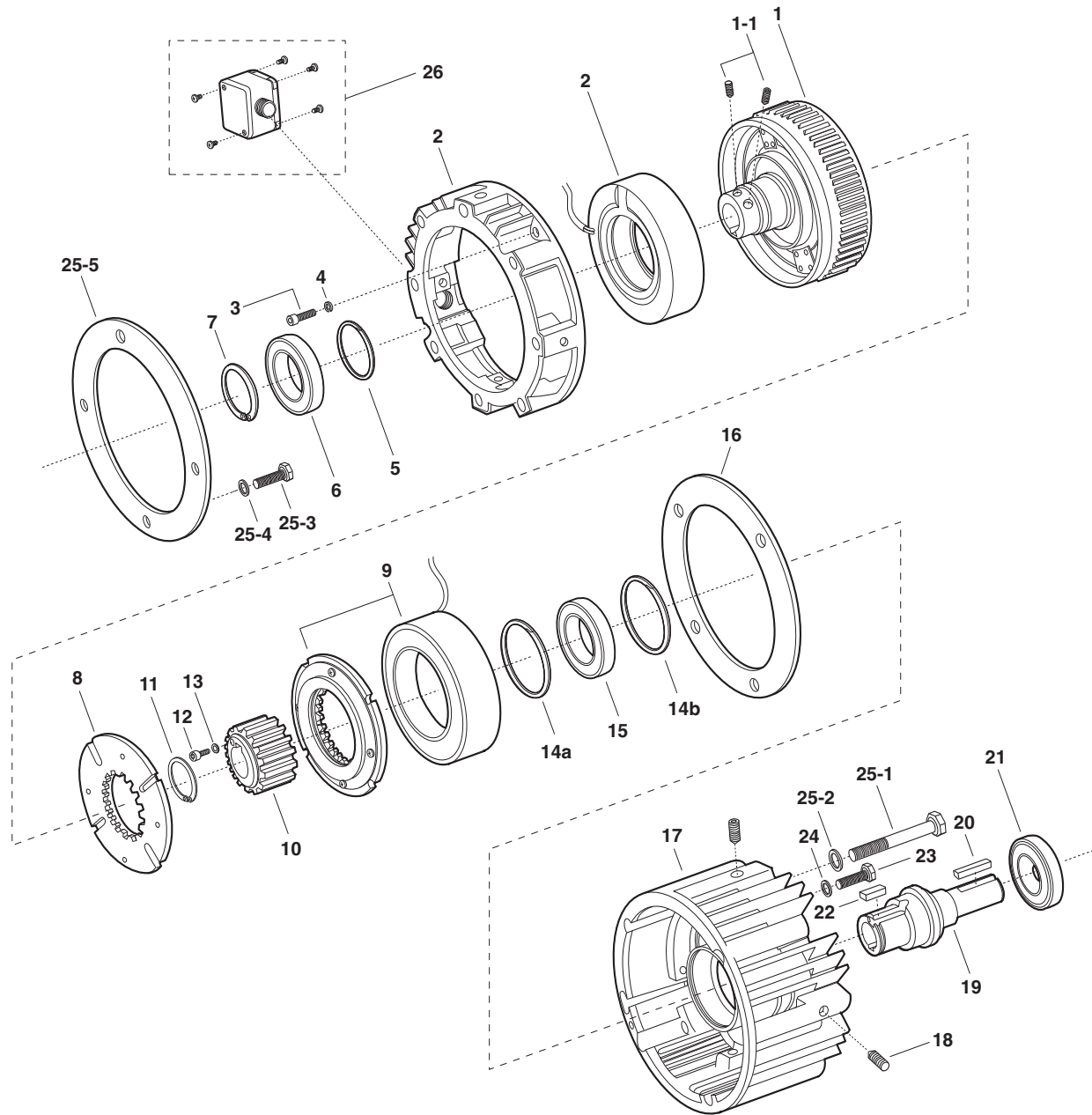
* Magnets and armatures sold only in pre-burnished sets to assure rated torque available upon installation.

These units, when used with the correct Warner Electric conduit box, meet the standards of UL508 and are listed under guide card #NMTR2, file #59164 and are CSA certified under file #LR11543.



MEX (55) 53 63 23 31 MTY (81) 83 54 10 18
 QRO (442) 1 95 72 60 ventas@industrialmagza.com
Service Parts

UM-1020 FBC Motor Clutch/Electrically Released Brake



Component Parts

Item	Description	UM-50		UM-100		UM-180		UM-210		UM-215	
		Part No.	Qty.	Part No.	Qty.	Part No.	Qty.	Part No.	Qty.	Part No.	Qty.
1	Rotor Assembly	5370-751-019	1	5370-751-022	1	5370-751-017	1	5371-751-012	1	5371-751-031	1
	w/fan and hub	797-1098	2	797-0069	2	797-0069	2	797-1098	2	798-1098	2
2	Field w/housing		1		1		1		1		1
	24 volt	5370-451-064				5370-451-059		5371-451-029			
	90 volt	5370-451-063		5370-451-058		5370-451-058		5371-451-028		5371-451-028	
3	Capscrew	797-1451	2	797-1451	2	797-1451	1	797-1452	2	797-1452	2
4	Lockwasher	950-0436	4	950-0102	2	950-0436	5	950-0372	2	950-0102	2
5	Retaining Ring	748-0101	1	748-0101	1	748-0101	1	748-0558	1	748-0558	1
6	Ball Bearing	166-0150	1	166-0101	1	166-0101	1	166-0168	1	166-0168	1
7	Retaining Ring	748-0018	1	748-0101	1	748-0001	1	748-0067	1		
8	Armature	5370-111-011	1	5370-111-013	1	5370-111-013	1	5371-111-005	1	5371-111-005	1
9	Magnet and Armature (sold only in matched pairs)*		1		1		1		1		1
	24 volt	5370-6				5370-8		5371-3			
	90 volt	5370-1		5370-2		5370-2		5371-1		5371-1	
10	Armature Hub	540-1640	1	540-1644	1	540-1644	1	540-0835	1	540-2040	1
11	Retaining Ring	748-0445	1	748-0676	1	748-0676	1				
12	Capscrew							797-0081	6	797-0081	6
13	Lockwasher							950-0372	6	950-0372	6
14a	Retaining Ring	748-0113	1	748-0101	1	748-0101	1	748-0112	1	748-0112	1
14b	Retaining Ring	748-0113	1								
15	Ball Bearing	166-0149	1	166-0101	1	166-0101	1	166-0142	1	166-0142	1
16	Spacer	807-1085	1	807-1085	1	807-1085	1	807-1053	1	807-1053	1
17	Housing	535-0170	1	535-0171	1	535-0171	1	535-0172	1	535-0172	1
18	Setscrew	797-0471	4	797-0471	4	797-0471	4	797-0471	4	797-0471	1
19	Shaft	798-0046	1	798-0128	1	798-0085	1	798-0051	1	798-0254	1
20	Key	590-0029	1	590-0029	1	590-0029	1	590-0019	1	590-0124	1
21	Ball Bearing	166-0155	1	166-0143	1	166-0143	1	166-0144	1	166-0144	1
22	Key	590-0043	1	590-0084	1	590-0084	1				
23	Capscrew			797-1294	2	797-1294	2	797-0083	4	797-0083	4
24	Lockwasher							950-0372	4	950-0372	4
25	Mounting Accessory	5370-101-043	1	5370-101-043	1	5370-101-043	1	5371-101-039	1	5371-101-039	1
	25-1 capscrew	797-1440	4	797-1440	4	797-1440	4	797-1453	4		
	25-2 lockwasher	950-0354	4	950-0354	4	950-0354	4	950-0111	4		
	25-3 capscrew							797-1442	4		
	25-4 lockwasher							950-0101	4		
	25-5 adapter							104-0321	1		
26	Conduit Box (Optional)	5370-101-042	1	5370-101-042	1	5370-101-042	1	5370-101-042	1		
	Key for rotary assembly-not shown	5370-101-072	1	5370-101-072	1	5370-101-072	1	5371-101-043	1		

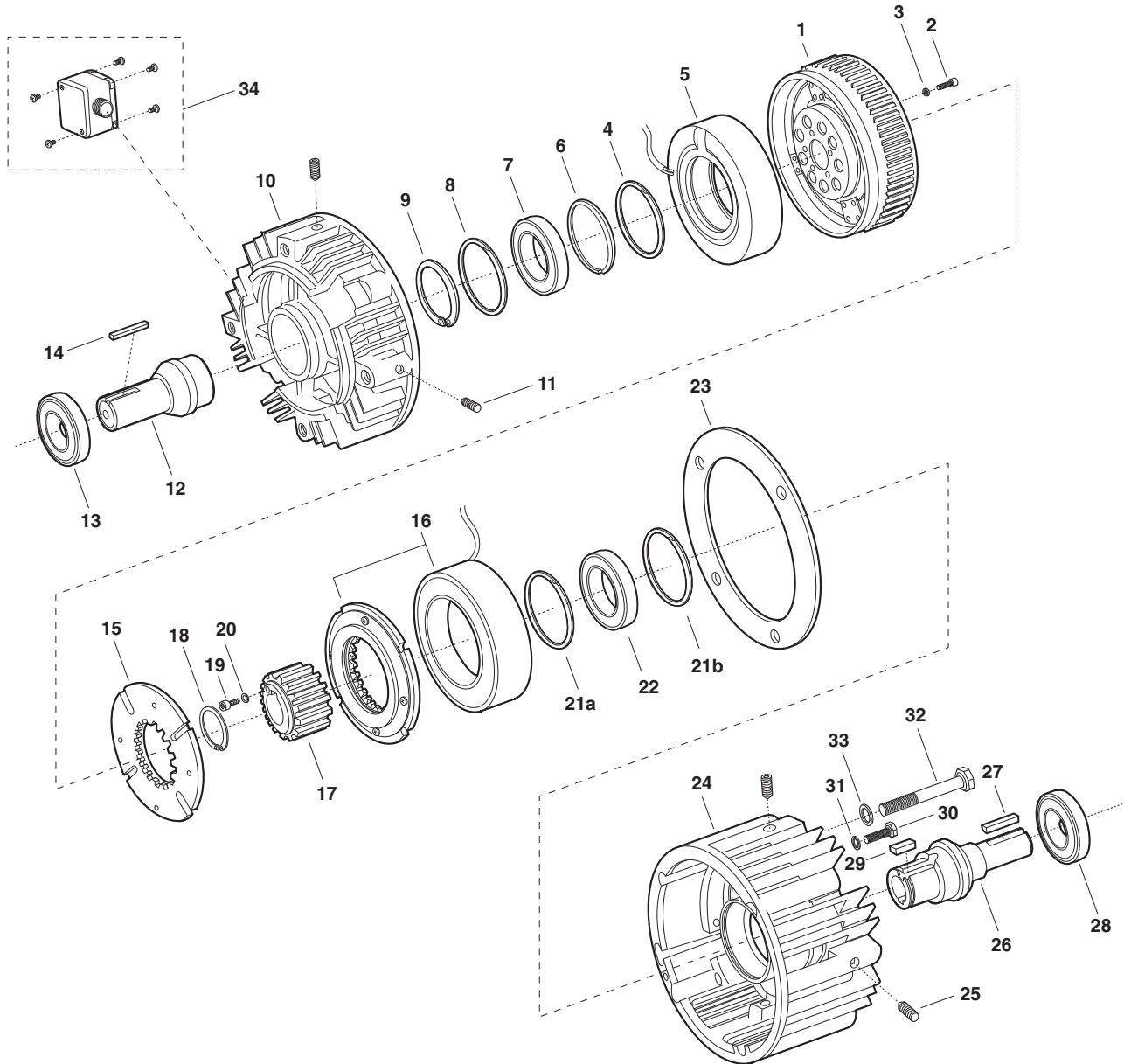
Refer to Service Manual P-213.

*Magnets and armatures sold only in pre-burnished sets to assure maximum torque is available upon installation.



MEX (55) 53 63 23 31 MTY (81) 83 54 10 18
 QRO (442) 1 95 72 60 ventas@industrialmagza.com
Service Parts

UM-2030FBC Input Clutch/Electrically Released Brake



Component Parts

Item	Description	UM-50		UM-180		UM-210	
		Part No.	Qty.	Part No.	Qty.	Part No.	Qty.
1	Rotor Assembly w/fan	5370-751-006	1	5370-751-009	1	5371-751-007	1
2	Capscrew	797-1294	4	797-1214	5	797-0083	6
3	Lockwasher	950-0436	4	950-0436	5	950-0372	6
4	Spacer			807-0062	1	807-0061	1
5	Field (with housing UM-50-20FBC only)		1		1		1
	24 volt	5370-451-074		5370-451-005		5371-451-005	
	90 volt	5370-451-073		5370-451-008		5371-451-003	
6	Retaining Ring	748-0113	1	748-0101	1	748-0112	1
7	Ball Bearing	166-0149	1	166-0101	1	166-0142	1
8	Retaining Ring	748-0113	1				
9	Retaining Ring	748-0017	1				
10	Housing			535-0164	1	535-0129	1
11	Setscrew			797-0471	4	797-0471	4
12	Shaft	798-0047	1	798-0124	1	798-0123	1
13	Bearing	166-0155	1	166-0143	1	166-0144	1
14	Key	590-0029	1	590-0029	1	590-0019	1
15	Armature Assembly	5370-111-011	1	5370-111-013	1	5371-111-005	1
16	Magnet and Armature (sold only in pairs)*		1		1		1
	24 volt	5370-6		5370-8		5371-3	
	90 volt	5370-1		5370-2		5371-1	
17	Armature Hub	540-1640	1	540-1644	1	540-0835	1
18	Retaining Ring	748-0445	1	748-0676	1		
19	Capscrew					797-0081	6
20	Lockwasher					950-0372	6
21a	Retaining Ring	748-0113	1	748-0101	1	748-0112	1
21b	Retaining Ring	748-0113	1	—		—	
22	Ball Bearing	166-0149	1	166-0101	1	166-0142	1
23	Spacer	807-1085	1	807-1085	1	807-1053	1
24	Housing	535-0170	1	535-0171	1	535-0172	1
25	Setscrew	797-0471	4	797-0471	4	797-0471	4
26	Shaft	798-0046	1	798-0085	1	798-0051	1
27	Key	590-0029	1	590-0029	1	590-0019	1
28	Ball Bearing	166-0155	1	166-0143	1	166-0144	1
29	Key	590-0043	1	590-0084	1		
30	Capscrew			797-1294	2	797-0083	4
31	Lockwasher					950-0372	4
32	Capscrew	797-0346	4	797-0346	4	797-1357	4
33	Lockwasher	950-0354	4	950-0354	4	950-0033	4
34	Conduit Box (Optional)	5370-101-042	1	5370-101-042	1	5370-101-042	1

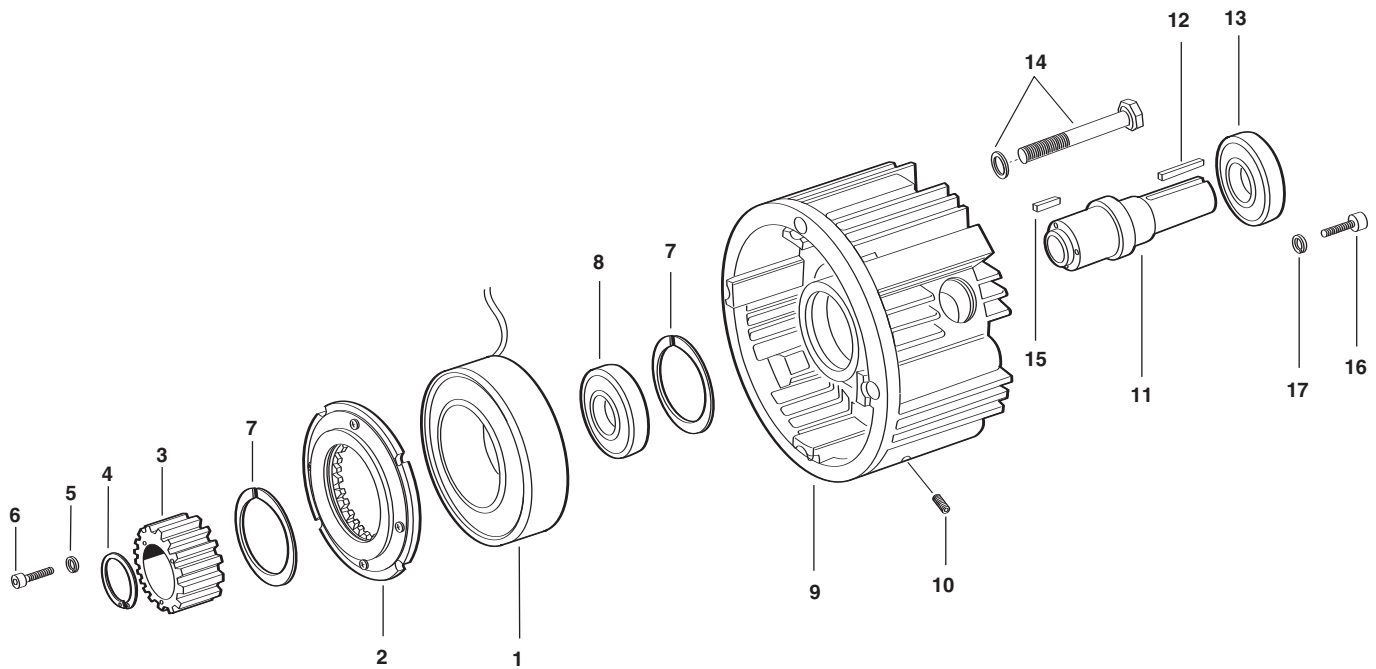
Refer to Service Manual P-213.

*Magnets and armatures sold only in pre-burnished sets to assure maximum torque is available upon installation.



MEX (55) 53 63 23 31 MTY (81) 83 54 10 18
 QRO (442) 1 95 72 60 ventas@industrialmagza.com
Service Parts

EM-20FBB Brake Module



Component Parts

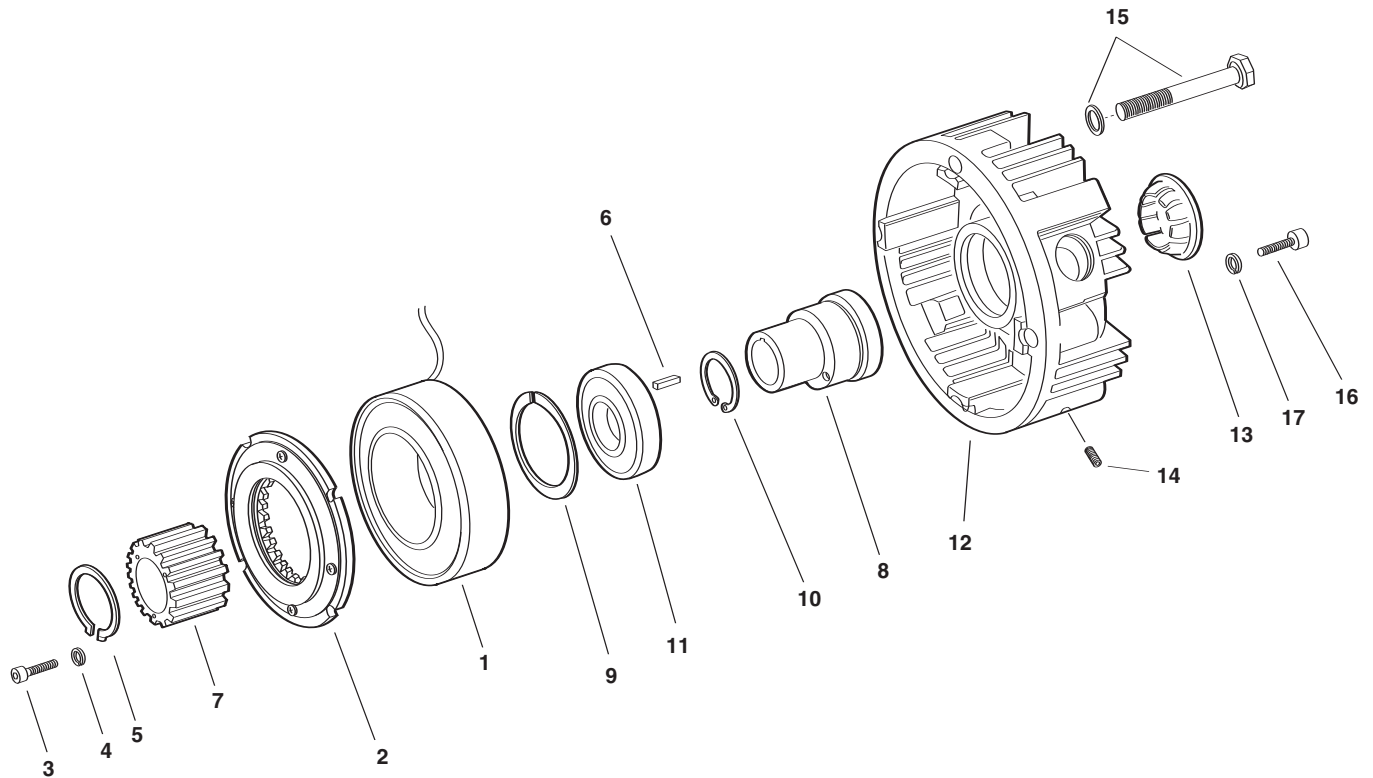
Item	Description	EM-50		EM-100		EM-180		EM-210	
		Part No.	Qty.	Part No.	Qty.	Part No.	Qty.	Part No.	Qty.
1 & 2	Magnet and Armature (sold only in matched pairs)* 24 volt 90 volt	5370-6 5370-1	1	5370-8 5370-2	1	5370-8 5370-2	1	5371-3 5371-1	1
3	Armature Hub	540-1638	1	540-1677	1	540-1642	1	540-0741	1
4	Retaining Ring	758-0445	1	748-0676	1	748-0676	1	748-0112	1
5	Lockwasher							950-0372	6
6	Capscrew							797-0081	6
7	Retaining Ring	748-0113	2	748-0101	1	748-0101	1		
8	Bearing	166-0149	1	166-0101	1	166-0101	1	166-0142	1
9	Housing	535-0130	1	535-0148	1	535-0148	1	535-0144	1
10	Setscrew	797-0471	4	797-0471	4	797-0471	4	797-0471	4
11	Shaft	5370-798-001	1	5370-798-005	1	5370-798-002	1	5371-798-001	1
12	Key	590-0029	1	590-0029	1	590-0029	1	590-0019	1
13	Bearing	166-0155	1	166-0143	1	166-0143	1	166-0144	1
14	Mounting Accessory	5370-101-017	1	5370-101-017	1	5370-101-017	1	5371-101-007	1
15	Key	590-0043	1	590-0084	1	590-0084	1		
16	Capscrew			797-1214	2	797-1214	2	797-0083	2
17	Lockwasher							950-0372	2

Refer to Service Manual P-213.

*Magnets and armatures sold only in pre-burnished sets to assure maximum torque is available upon installation.



MEX (55) 53 63 23 31 MTY (81) 83 54 10 18
 QRO (442) 1 95 72 60 ventas@industrialmagza.com
Service Parts



Component Parts

Item	Description	EM-50		EM-100		EM-180		EM-210	
		Part No.	Qty.	Part No.	Qty.	Part No.	Qty.	Part No.	Qty.
1 & 2	Magnet and Armature (sold only in matched pairs)* 24 volt 90 volt	5370-6 5370-1	1	5370-8 5370-2	1	5370-8 5370-2	1	5371-3 5371-1	1
3	Capscrew							797-0081	6
4	Lockwasher							950-0372	6
5	Retaining Ring	748-0445	1						
6	Key	590-0043	1	590-0084	1	590-0084	1		
7	Splined Hub	540-1638	1	540-1677	1	540-1642	1	540-0741	1
8	Hub	5370-541-002	1	5370-541-004	1	5370-541-003	1	5371-541-001	1
9	Retaining Ring	748-0013	2	748-0101	1	748-0101	1	748-0112	1
10	Retaining Ring			748-0676	1	748-0676	1		
11	Bearing	166-0149	1	166-0101	1	166-0101	1	166-142	1
12	Housing	535-0136	1	535-0150	1	535-0150	1	535-0149	1
13	Plug	680-0028	1	680-0028	1	680-0028	1	680-0027	1
14	Setscrew	797-0471	4	797-0471	4	797-0471	4	797-0471	4
15	Mounting Accessory	5370-101-017	1	5370-101-017	1	5370-101-023	1	5371-101-007	1
16	Magnet mounting Screw			797-1214	2	797-1214	2	797-0083	2
17	Lockwasher							950-0372	2

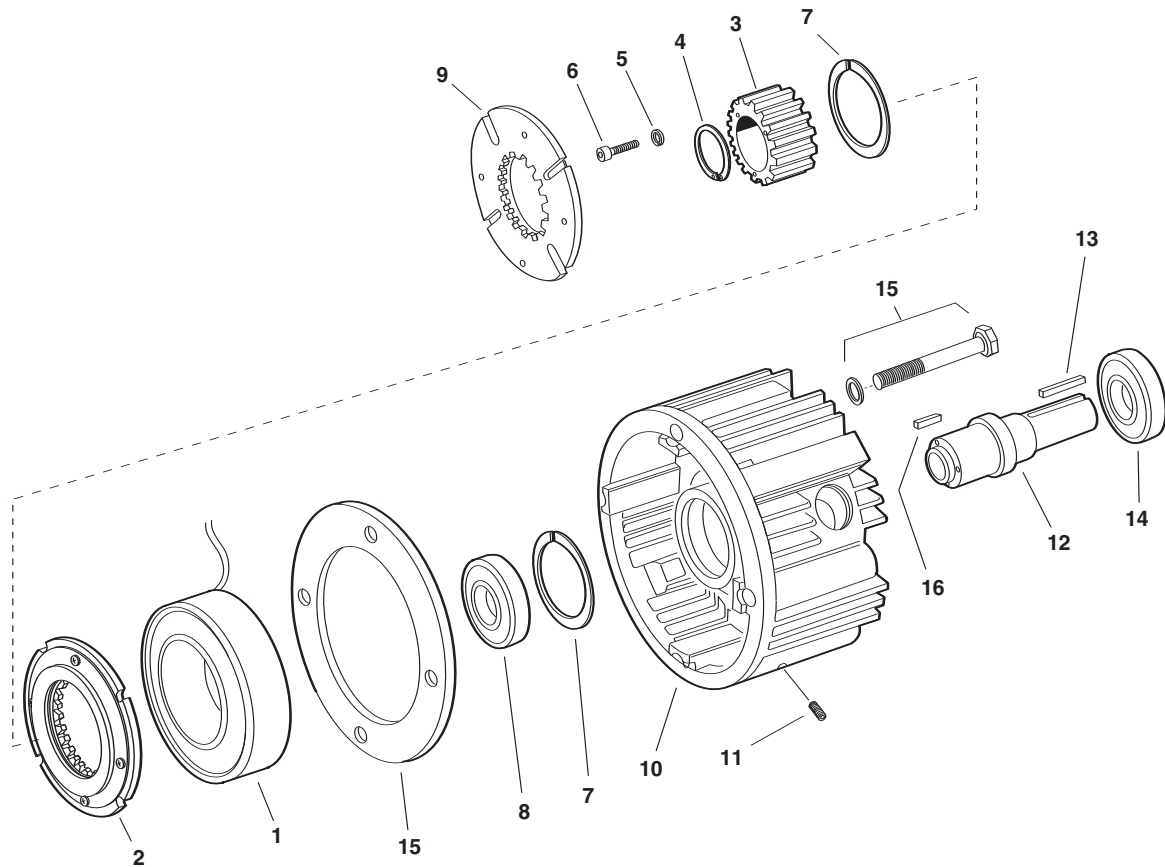
Refer to Service Manual P-213.


*Magnets and armatures sold only in matched sets to assure maximum torque is available upon installation.

INDUSTRIAL MAGZA MEX (55) 53 63 23 31 MTY (81) 83 54 10 18
 DIST. AUTORIZADO QRO (442) 1 95 72 60 ventas@industrialmagza.com

Service Parts

EM-20FBC Clutch/Brake Module




INDUSTRIAL MAGZA
 DIST. AUTORIZADO

MEX (55) 53 63 23 31 MTY (81) 83 54 10 18
 QRO (442) 1 95 72 60 ventas@industrialmagza.com

Component Parts

Item	Description	EM-50		EM-180		EM-210	
		Part No.	Qty.	Part No.	Qty.	Part No.	Qty.
1 & 2	Magnet and Armature (sold only in matched pairs)* 24 volt 90 volt	5370-6 5370-1	1	5370-8 5370-2	1	5371-3 5371-1	1
3	Armature Hub	540-1640	1	540-1644	1	540-0835	1
4	Retaining Ring	758-0445	1	748-0676	1	748-0112	1
5	Lockwasher					950-0372	6
6	Capscrew					797-0081	6
7	Retaining Ring	748-0113	2	748-0101	1		
8	Bearing	166-0149	1	166-0101	1	166-0142	1
9	Armature	5370-111-011	1	5370-111-013	1	5371-111-005	1
10	Housing	535-0130	1	535-0145	1	535-0144	1
11	Setscrew	797-0471	4	797-0471	4	797-0471	4
12	Shaft	798-0045	1	798-0086	1	798-0050	1
13	Key	590-0029	1	590-0029	1	590-0019	1
14	Bearing	166-0155	1	166-0143	1	166-0144	1
15	Mounting Accessory	5370-101-033	1	5370-101-034	1	5371-101-018	1
16	Key	590-0043	1	590-0084	1		
17	Capscrew			797-1214	2	797-0083	2
18	Lockwasher					950-0372	2

Refer to Service Manual P-213.

*Magnets and armatures sold only in pre-burnished sets to assure maximum torque is available upon installation.

Service Parts