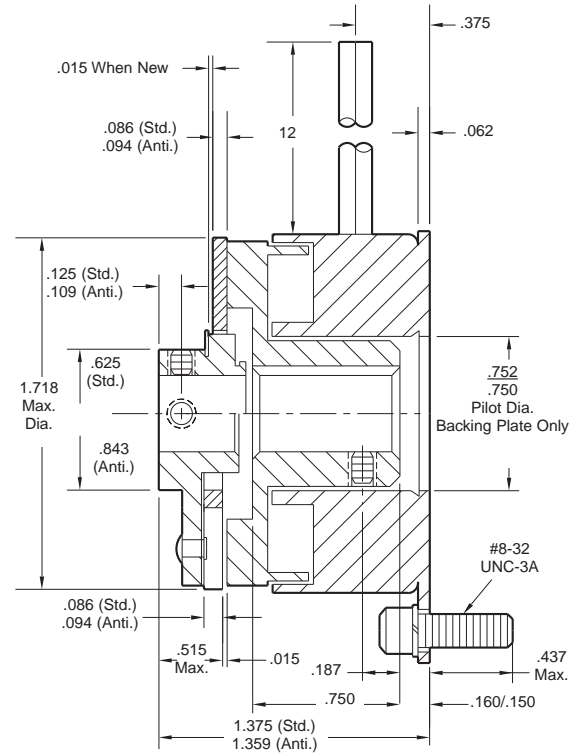
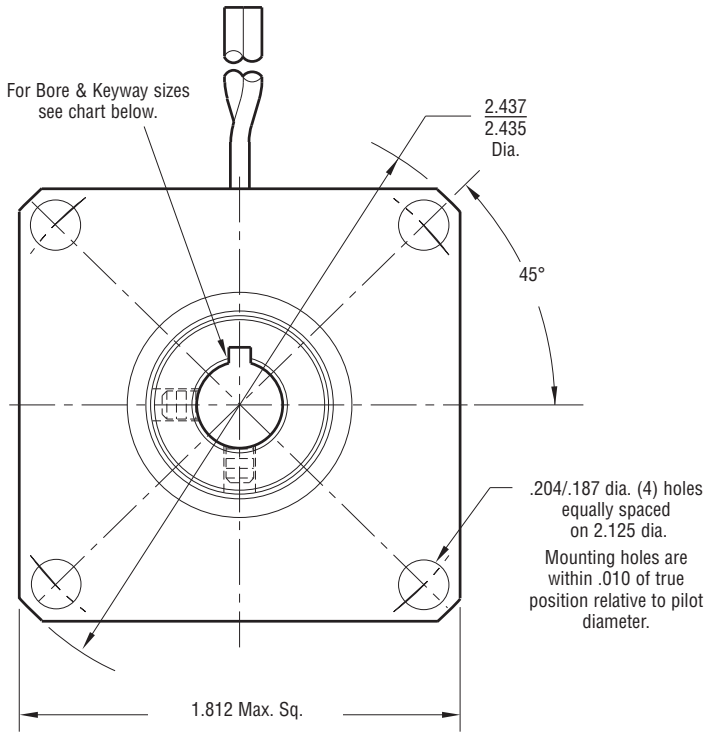
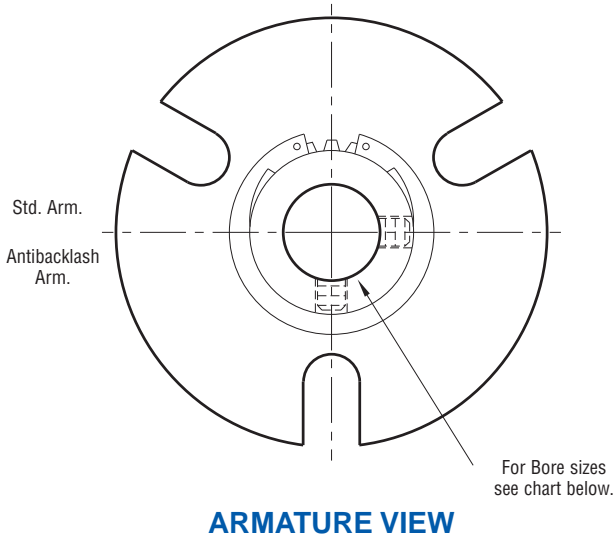
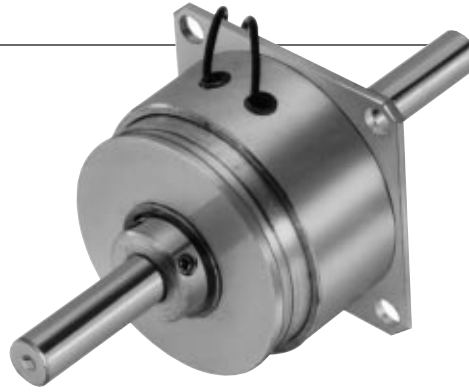


Clutch Coupling

SFC-170 Flange Mounted



Bore Dimensions

| Rotor Bore Dia. | Keyway | Armature Bore Dia. |
|-----------------|-------------|--------------------|
| .251/.250 | .062 x .031 | .251/.250 |
| .313/.312 | .062 x .031 | .313/.312 |
| .376/.375 | .093 x .046 | .376/.375 |

| | |
|------------------|----------------|
| Static Torque | 15 lb. in. |
| Maximum Speed | 5,000 rpm |
| Standard Voltage | D.C. 6, 24, 90 |

All dimensions are nominal unless otherwise noted.

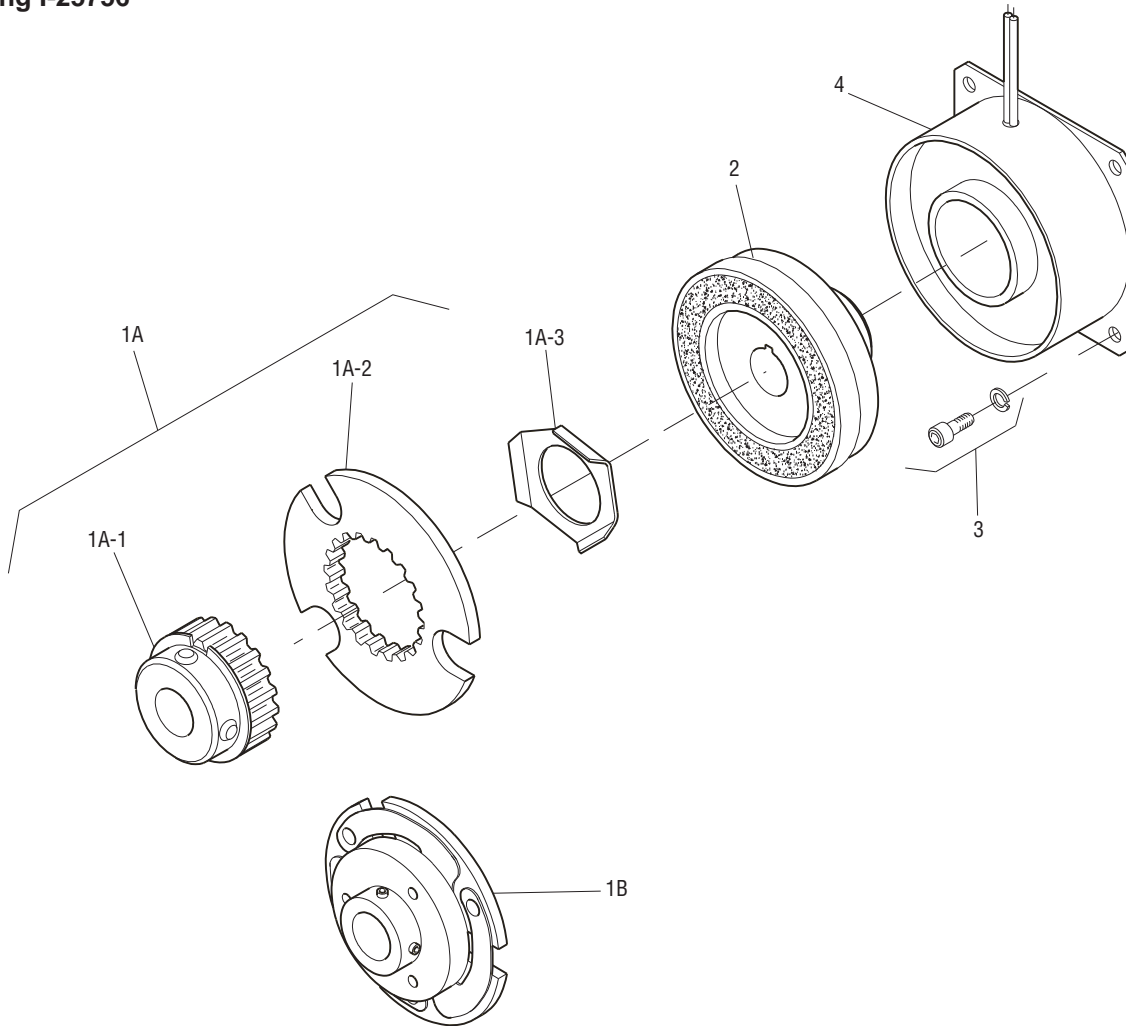
Information on inertia and weights begins on page 239. Coil data is on pages 250 and 251.

Customer Shall Maintain:

1. Squareness of field mounting face with rotor shaft within .003 T.I.R. measured at pilot diameter
2. Concentricity of field mounting pilot diameter with rotor mounting shaft within .003 T.I.R.
3. Rotor and armature shafts in line within .003 T.I.R.



Drawing I-25756



| Item | Description | Part Number | Qty. |
|------|-----------------------|--------------|------|
| 1A | Armature and Hub | | |
| 1A-1 | Armature Hub | | 1 |
| | 1/4" Bore | 5102-541-002 | |
| | 5/16" Bore | 5102-541-003 | |
| | 3/8" Bore | 5102-541-004 | |
| 1A-2 | Armature | 110-0111 | 1 |
| 1A-3 | Release Spring | 808-0019 | 1 |
| 1B | Antibacklash Armature | | 1 |
| | 1/4" Bore | 5623-111-008 | |
| | 5/16" Bore | 5623-111-009 | |
| | 3/8" Bore | 5623-111-010 | |
| 2 | Rotor | | 1 |
| | 1/4" Bore | 5603-751-028 | |
| | 5/16" Bore | 5603-751-029 | |
| | 3/8" Bore | 5603-751-030 | |
| 3 | Mounting Accessory | 5102-101-001 | 1 |
| 4 | Field | | 1 |
| | 6 Volt | 5603-451-047 | |
| | 24 Volt | 5603-451-049 | |
| | 90 Volt | 5603-451-051 | |

How to Order:

1. Specify Type of Armature Desired.
2. Specify Bore Size for Item 1A-1 or 1B and Item 2.
3. Specify Voltage for Item 4.
4. See Controls Section.

Example:

SFC-170 Clutch per I-25756 - 90 Volt
 Antibacklash Armature
 1/4" Armature Hub Bore
 1/4" Rotor Bore

These units meet standards set forth in UL508 and are listed under guide card #NMTR2, file #59164.

These units are CSA certified under file #LR11543.

Refer to Service Manual P-200.