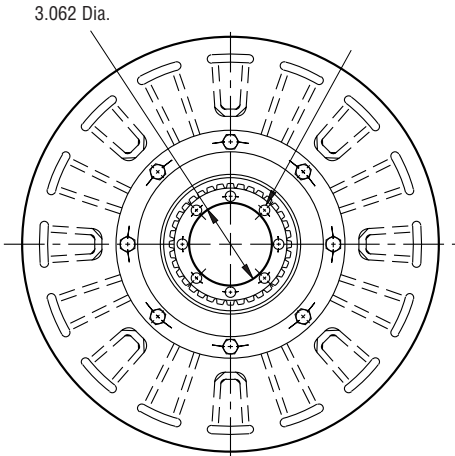
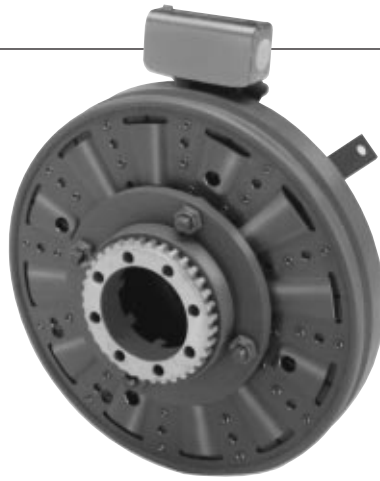


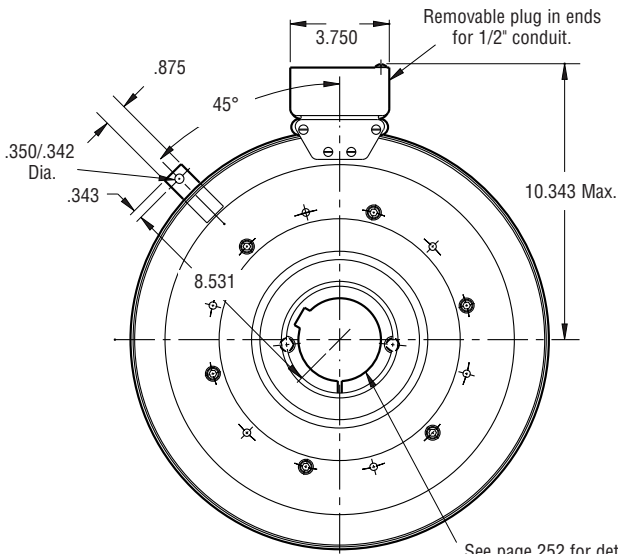
Clutch, Hi-Torque

SF-1525 H.T. Bearing Mounted

.397/.388 dia. (8) holes (hub) equally spaced on 3.625 dia. and within .003 of true position relative to 4.313/4.311 pilot diameter.



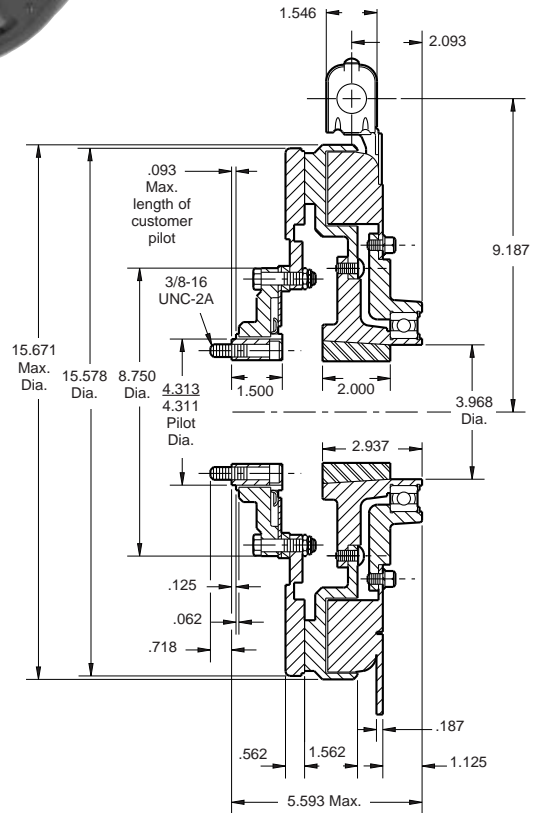
ARMATURE VIEW



FIELD VIEW

Customer Shall Maintain:

1. Armature hub pilot diameter to be concentric with field and rotor mounting shaft within .010 T.I.R.



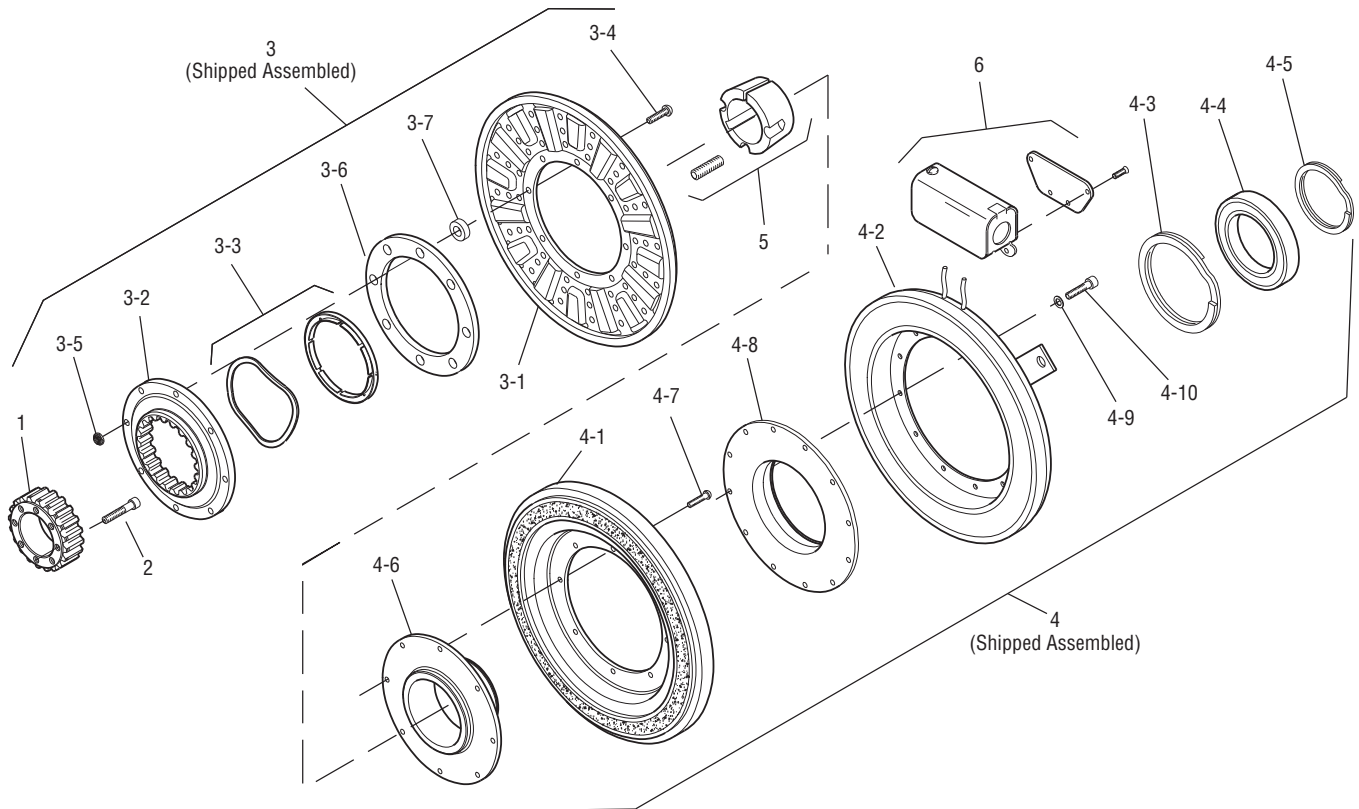
| | |
|------------------|--------------|
| Shaft Size | .937– 3.000 |
| Static Torque | 1,350 lb.ft. |
| Maximum Speed | 1,800 rpm |
| Standard Voltage | D.C. 90 |

All dimensions are nominal unless otherwise noted.

Information on inertia and weights begins on page 239. Coil data is on pages 250 and 251.



Drawing I-25643



| Item | Description | Part Number | Qty. |
|------|-----------------------------|--------------|------|
| 1 | Splined Hub | 540-0148 | 1 |
| 2 | Accessory, Mounting | 5202-101-001 | 1 |
| 3 | Armature & Adapter Assembly | 5204-111-004 | 1 |
| 3-1 | Armature | 5324-111-034 | 1 |
| 3-2 | Splined Adapter | 104-0011 | 1 |
| 3-3 | Autogap Accessory | 5323-101-002 | 1 |
| 3-4 | Screw | 797-0342 | 8 |
| 3-5 | Locknut | 661-0004 | 8 |
| 3-6 | Retainer Plate | 686-0003 | 1 |
| 3-7 | Spacer | 748-0333 | 8 |
| 4 | Field & Rotor Assembly | | 1 |
| | 90 Volt | 5204-452-015 | |
| 4-1 | Rotor | 5204-751-001 | 1 |
| 4-2 | Field | | 1 |
| | 90 Volt | 5204-451-090 | |
| 4-3 | Retainer Ring | 748-0114 | 1 |
| 4-4 | Ball Bearing | 166-0163 | 1 |
| 4-5 | Retainer Ring | 748-0583 | 1 |
| 4-6 | Rotor Hub | 540-1306 | 1 |

| Item | Description | Part Number | Qty. |
|------|------------------|----------------------|------|
| 4-7 | Buttonhead Screw | 797-1261 | 8 |
| 4-8 | Ring Adapter | 748-1048 | 1 |
| 4-9 | Lockwasher | 950-0359 | 6 |
| 4-10 | Sockethead Screw | 797-0424 | 6 |
| 5 | Bushing* | 180-0223 to 180-0256 | 1 |
| 6 | Conduit Box | 5200-101-012 | 1 |

How to Order:

1. Specify Bore Size for Item 5.
2. Specify Voltage for Item 4.
3. See Controls Section.

Example:

SF-1525 Clutch Hi-Torque per I-25643 - 90 Volt, 1" Bore

These units, when used in conjunction with the correct Warner Electric conduit box, meet the standards of UL508 and are listed under guide card #NMTR, file #59164. These units are CSA certified under file #LR11543.

*See page 252 for specific part numbers.

Refer to Service Manual P-215.