

**Sprocket Driven
 Rollers with
 Welded
 Construction
 Series 3400
 (precision bearings)
 Series 3500
 (commercial bearings)**

Bearing

Series 3500 Commercial

Commercial grade steel ball bearings which are zinc plated for mild corrosion resistance.

Series 3400 Precision

Precision ground chrome alloy steel ball bearings 6203ZZ and 6205ZZ.

Tube

Diameters (inch). 1.90, 2.50

Steel roller tube for 1.90" diameter is 16 gauge (.065) supplied in mill finish.

Steel roller tube for 2.50" diameter is 11 gauge (.120) supplied in mill finish.

Shaft

Hexagonal: .437, .687

Standard shaft material is unplated low-carbon steel. For mounting convenience both .437 and .687 hex shafts can be supplied either spring-loaded for snap-in assembly, or with tapped ends for bolted construction.

Sprockets

1.90" diameter:

15 teeth - #50 chain

18 teeth - #40 Chain

2.50" diameter:

15 teeth - #60 chain

18 teeth - #50 chain

Application

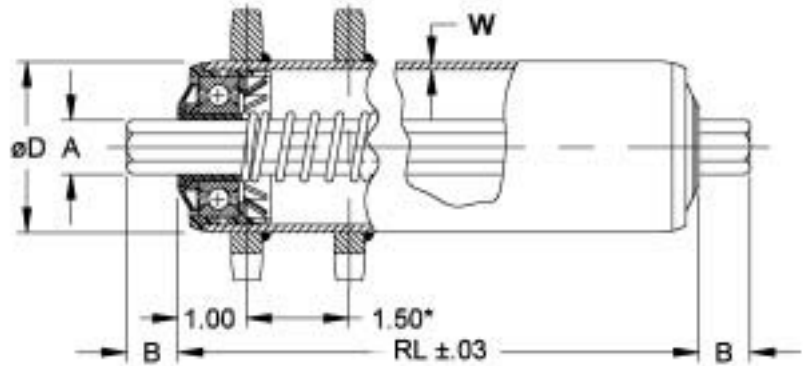
Series 3400 and 3500 drive rollers provide a simple and economical means for building powered roller conveyors.

These drive rollers are available with either single or double sprockets. Sprockets are MIG welded with 360° continuous weld.

The double sprocket design is particularly well suited for heavy duty applications where short lengths of chain connect each roller to the next.

Single sprocket rollers, driven by a continuous chain that engages the sprocket teeth tangentially, are better suited for light duty applications.

**Sprocket Driven
 Rollers
 Series 3400**



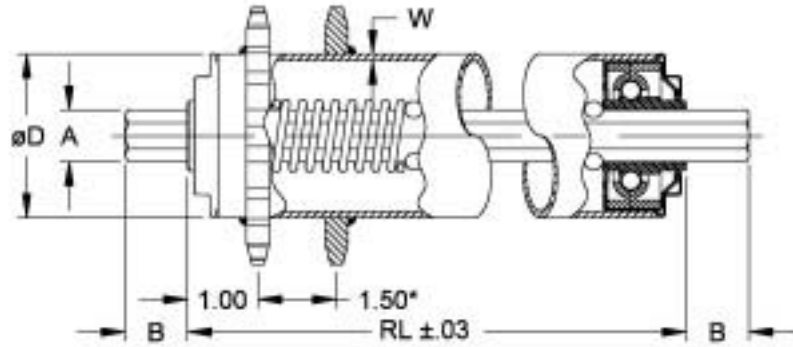
(Typical RL = BF - .12)

	Part Number	D	W	A	B	Material	Bearing/Finish	Remarks
Bearing	3.450._____-	1.90	.065	.437 hex		Sintered Iron	6203ZZ	Precision Bearing
	3.462._____-	2.50	.120	.687 hex		Sintered Iron	6205ZZ	Precision Bearing
Tube	_____.J30.____-	1.90	.065			Steel	None	2 - #40 - 18 Sprockets
	_____.P65.____-	1.90	.065			Steel	None	1 - #50 - 15 Sprocket
	_____.H47.____-	1.90	.065			Steel	None	2 - #50 - 15 Sprockets
	_____.M93.____-	2.50	.120			Steel	None	2 - #50 - 18 Sprockets
	_____.P98.____-	2.50	.120			Steel	None	2 - #60 - 15 Sprockets
Shaft	_____.C38-			.437 hex	.06	Steel	None	Tapped 5/16-18 x 5/8D
	_____.V15-			.437 hex	.56	Steel	None	Spring-loaded
	_____.W54-			.687 hex	.75	Steel	None	Spring-loaded
	_____.C64-			.687 hex	.06	Steel	None	Tapped 3/8-16 x 3/4D

Note: For Hex shafts, "A" dimension indicates flat-to-flat measurement.



**Sprocket Driven
Rollers
Series 3500**

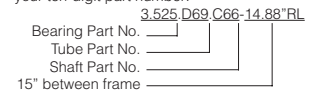


(Typical RL = BF - .12)

	Part Number	D	W	A	B	Material	Finish	Remarks
Bearing	3.520._____-	1.90	.065	.437 hex		Steel	Zinc-Plated	Commercial bearings
	3.525._____-	2.50	.120	.687 hex		Steel	Zinc-Plated	Commercial bearings
Tube	_____.D42.____-	1.90	.065			Steel	None	1 - #40 - 18 Sprocket
	_____.D43.____-	1.90	.065			Steel	None	2 - #40 - 18 Sprocket
	_____.D44.____-	1.90	.065			Steel	None	1 - #50 - 15 Sprocket
	_____.D46.____-	1.90	.065			Steel	None	2 - #50 - 15 Sprocket
	_____.D61.____-	2.50	.120			Steel	None	1 - #50 - 18 Sprocket
	_____.D67.____-	2.50	.120			Steel	None	2 - #50 - 18 Sprocket
	_____.D68.____-	2.50	.120			Steel	None	1 - #60 - 15 Sprocket
	_____.D69.____-	2.50	.120			Steel	None	2 - #60 - 15 Sprocket
Shaft	_____.C38-			.437 hex	.06	Steel	None	Tapped 5/16-18 x 5/8D
	_____.C41-			.437 hex	.56	Steel	None	Spring-loaded
	_____.C64-			.687 hex	.06	Steel	None	Tapped 3/8-16 x 3/4D
	_____.C66-			.687 hex	.75	Steel	None	Spring-loaded

Note: For Hex shafts, "A" dimension indicates flat-to-flat measurement.

To order, use the following reference to form your ten-digit part number:





MEX (55) 53 63 23 31 MTY (81) 83 54 10 18
 QRO (442) 1 95 72 60 ventas@industrialmagza.com

Sprocket Driven Rollers Series 3400, 3500

	Tube Dia. In.	1.9 Steel	2.5 Steel	2.5 Steel
	Material	16	11	11
	Gauge	.437	.687	.687
	Shaft Dia.	#50 - 15	#60 - 15	#50 - 18
	Sprocket			
	RL Inches			
Series 3400 precision bearing roller load capacity in lbs.	8	675	800	800
	12	675	800	800
	16	675	800	800
	24	675	800	800
	32	403	600	600
	40	200	350	350
	48	115	190	190
	54	70	150	150
	62	47	120	120
	70	32	100	100

	Tube Dia. In.	1.9 Steel	1.9 Steel	2.5 Steel	2.5 Steel
	Material	16	16	11	11
	Gauge	.437	.437	.687	.687
	Shaft Dia.	#40 - 18	#50 - 15	#60 - 15	#50 - 18
	Sprocket				
	RL Inches				
Series 3500 commercial bearing roller load capacity in lbs.	8	225	225	600	600
	12	225	225	600	600
	16	225	225	600	600
	24	225	225	600	600
	32	225	225	300	500
	40	110	110	300	350
	48	56	56	300	300

Minimum Roller Lengths for Non-Grooved Rollers (all dimensions in inches)

	Diameter	Spring Loaded	Fixed	Loose Shaft/No Shaft
Series 3400 metal roller	1.90	4.25	3.75	3.75
	2.50	4.50	3.75	3.75

Minimum Roller Lengths for Non-Grooved Rollers

	Diameter	Spring Loaded	Fixed	Loose Shaft/No Shaft
Series 3500 metal roller	1.90	3.75	3.75	3.75
	2.50	5.25	3.75	3.75

Speed Ratings

Bearing Type	Maximum Recommended Conveyor Speed
Precision – Series 3400	100 fpm
Commercial – Series 3500	60 fpm