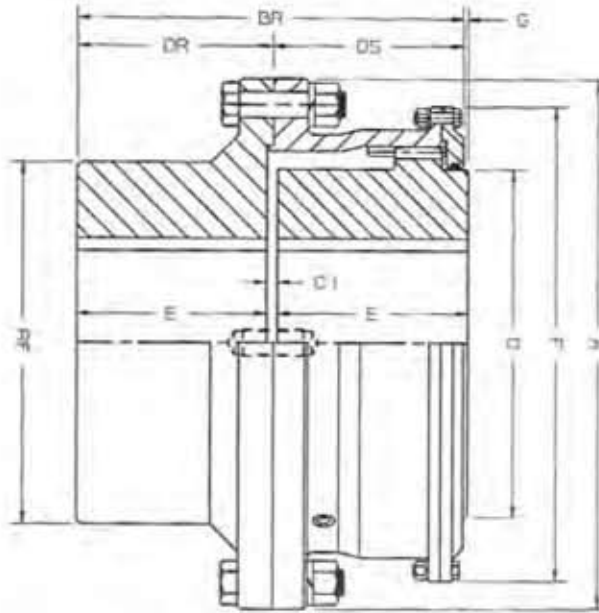


POWERTORK®

DATA SHEET DS109 REV. 02

Series "F" Flex Rigid Heavy Duty Flange Type Gear Coupling. (Sizes 16 to 30)



Series F	Size	16	18	20	22	24	26	28	30
Rating (HP/100 RPM)		16150	21150	28850	38200	42500	53000	66000	80500
Torque Capacity (IN·LBS x 10 ³)		10179	13330	18183	24076	26786	33403	41597	50735
Maximum Speed (RPM)	(1)	750	500	400	300	200	200	200	200
Flex Hub	Maximum Bore	22.50	25.75	27.75	30.50	33.75	37.25	40.50	44.00
	Standard Keyway	6 x 2	6 x 2	7 x 2-1/2	7 x 2-1/2	8 x 3	8 x 3	8 x 3	8 x 3
Rigid Hub	Maximum Bore	24.00	27.25	29.25	32.00	35.75	39.25	42.50	46.00
	Reduced Depth Keyway	6 x 1-1/4	6 x 1-1/4	7 x 1-3/4	7 x 1-3/4	8 x 2	8 x 2	8 x 2	8 x 2
Flex Hub	Maximum Bore	22.00	25.00	26.00	27.00	28.00	29.00	30.00	36.00
	Standard Keyway	5 x 1-3/4	6 x 2	6 x 2	7 x 2-1/2	7 x 2-1/2	7 x 2-1/2	7 x 2-1/2	8 x 3
	Maximum Bore	23.50	26.50	27.50	28.50	29.50	30.50	31.50	38.00
Rigid Hub	Reduced Depth Keyway	6 x 1	7 x 1-1/4	7 x 1-1/4	7 x 1-3/4	7 x 1-3/4	7 x 1-3/4	7 x 1-3/4	8 x 2
	A	43.00	47.25	53.50	59.00	64.25	68.50	73.75	78.00
	BR	35.38	36.56	42.81	46.63	50.13	53.63	54.88	55.88
	C1	1.00	1.00	1.00	1.13	1.13	1.13	1.13	1.13
	DR	17.88	18.50	21.63	23.63	25.38	27.13	27.75	28.25
	DS	17.50	18.06	21.19	23.00	24.75	26.50	27.13	27.63
	E	17.38	18.00	21.13	23.00	24.75	26.50	27.13	27.63
	F	38.88	43.13	48.38	52.88	57.38	61.63	66.19	70.69
	G	.38	.44	.44	.50	.50	.50	.50	.50
	O	29.50	33.50	37.00	40.50	45.00	49.00	53.00	57.00
	RF	30.00	34.00	36.00	38.00	40.00	42.00	44.00	50.00
Rough Stock Bore	(5)	13.0	15.0	17.0	19.0	21.0	23.0	25.0	27.0
Weight Solid Hubs (LBS)	(2)	9400	12400	16500	21000	26000	31500	36500	43000
Grease	Weight (LB-OZ.)	37-8	45	62-8	75	87-8	95	105	112-8
	Volume (Pints)	40	48	67	80.5	93.5	101.5	112.5	120.5

Notes:

- (1) Speed limits are recommendations based on experience and are intended as a guide only. Consult SCI for speeds higher than those listed.
- (2) Weights are for flex rigid couplings. Weights are approximate.
- (3) Lubrication values are for flex rigid couplings.
- (4) Maximum angular misalignment 1/2° per gear mesh.
Applications in excess of 1/2° misalignment per flex half coupling should be referred to SCI.
- (5) For smaller minimum bore sizes consult SCI.
- (6) Refer to Data Sheet DS110 for service factors.
- (7) Refer to reverse side of data sheet for sizes 8 to 15.



INDUSTRIAL MAGZA
DIST. AUTORIZADO

MEX (55) 53 63 23 31 MTY (81) 83 54 10 18
QRO (442) 1 95 72 60 ventas@industrialmagza.com