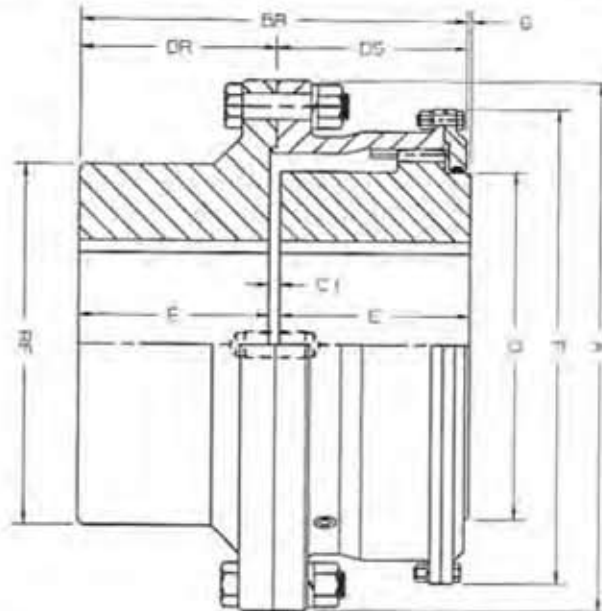


POWERTORK®

DATA SHEET DS109 REV. 02

Series "F" Flex Rigid Heavy Duty Flange Type Gear Coupling. (Sizes 8 to 15)



Series F	Size	8	9	10	11	12	13	14	15
Rating (HP/100 RPM)		2250	3200	4375	5800	7200	9050	11100	13500
Torque Capacity (IN-LBS x 10 ³)		1418	2017	2757	3656	4538	5704	6996	8508
Maximum Speed (RPM)	(1)	1750	1625	1500	1375	1250	1125	1000	875
Flex Hub	Maximum Bore	10.75	12.25	13.50	15.00	16.50	18.00	19.25	21.25
	Standard Keyway	2-1/2 x 7/8	3 x 1	3-1/2 x 1-1/4	3-1/2 x 1-1/4	4 x 1/2	4 x 1/2	5 x 1-3/4	5 x 1-3/4
	Reduced Depth Keyway	2-1/2 x 5/8	3 x 3/4	3-1/2 x 7/8	4 x 1	4 x 1	5 x 1-1/4	5 x 1-1/4	5 x 1-1/4
Rigid Hub	Maximum Bore	11.00	13.00	13.50	15.00	16.50	18.00	19.25	20.50
	Standard Keyway	2-1/2 x 7/8	3 x 1	3-1/2 x 1-1/4	3-1/2 x 1-1/4	4 x 1-1/2	4 x 1-1/2	5 x 1-3/4	5 x 1-3/4
	Reduced Depth Keyway	3 x 3/8	3-1/2 x 7/8	3-1/2 x 7/8	4 x 7/8	4 x 1	5 x 1	5 x 1	5 x 1
A		23.25	26.00	28.00	30.50	33.00	35.75	38.00	40.50
BR		19.88	22.06	24.38	26.63	28.13	29.75	31.50	33.44
C1		.38	.50	.50	.50	.50	.75	.75	.75
DR		10.13	11.19	12.38	13.50	14.25	15.00	15.88	16.88
DS		9.75	10.88	12.00	13.13	13.88	14.75	15.63	16.56
E		9.81	10.88	12.00	13.13	13.88	14.63	15.50	16.50
F		20.50	23.00	25.13	27.31	29.81	32.00	34.13	36.75
G		.25	.25	.25	.25	.25	.25	.25	.31
O		14.00	16.00	18.00	20.00	21.75	23.50	25.50	27.50
RF		15.25	17.50	19.00	20.75	23.00	24.75	26.50	28.00
Rough Stock Bore	(5)	5.0	6.0	7.0	8.0	9.0	10.0	11.0	12.0
Weight Solid Hubs (LBS)	(2)	1580	2060	2850	3480	4400	5600	6700	8000
Grease	Weight (LB-OZ.)	7	12	14	19	21.8	23.8	27.8	31
	Volume (Pints)	(3)	7.5	13	15	20.5	23	25	29.5

Notes:

- (1) Speed limits are recommendations based on experience and are intended as a guide only. Consult SCI for speeds higher than those listed.
- (2) Weights are for flex rigid couplings. Weights are approximate.
- (3) Lubrication values are for flex rigid couplings.
- (4) Maximum angular misalignment 1/2° per gear mesh.
Applications in excess of 1/2° misalignment per flex half coupling should be referred to SCI.
- (5) For smaller minimum bore sizes consult SCI.
- (6) Refer to Data Sheet DS110 for service factors.
- (7) Refer to reverse side of data sheet for sizes 16 to 30.



INDUSTRIAL MAGZA
DIST. AUTORIZADO

MEX (55) 53 63 23 31 MTY (81) 83 54 10 18
ORO (442) 1 95 72 60 ventas@industrialmagza.com