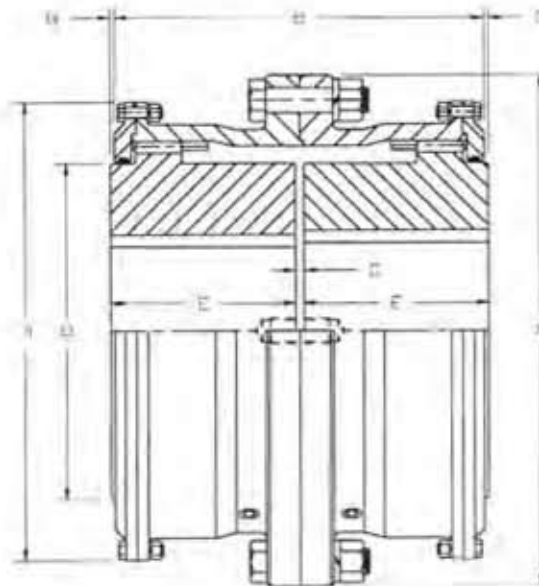


POWERTORK®

Series "F" Full Flex Heavy Duty Flange Type Gear Coupling. (Sizes 16 to 30)



Series F	Size	16	18	20	22	24	26	28	30
Rating (HP/100 RPM)		16150	21150	28850	38200	42500	53000	66000	80500
Torque Capacity (IN-LBS x 10 ³)		10179	13330	18183	24076	26786	33403	41597	50735
Maximum Speed (RPM)	(1)	750	500	400	300	200	200	200	200
Flex Hub	Maximum Bore	22.50	25.75	27.75	30.50	33.75	37.25	40.50	44.00
	Standard Keyway	6 x 2	6 x 2	7 x 2-1/2	7 x 2-1/2	8 x 3	8 x 3	8 x 3	8 x 3
	Maximum Bore	24.00	27.25	29.25	32.00	35.75	39.25	42.50	46.00
	Reduced Depth Keyway	6 x 1-1/4	6 x 1-1/4	7 x 1-3/4	7 x 1-3/4	8 x 2	8 x 2	8 x 2	8 x 2
Parallel Offset Capacity		.247	.256	.304	.334	.361	.382	.390	.395
A		43.00	47.25	53.50	59.00	64.25	68.50	73.75	78.00
B		35.00	36.13	42.38	46.00	49.50	53.00	54.25	55.25
C		1.00	1.00	1.00	1.00	1.00	1.00	1.00	1.00
E		17.38	18.00	21.13	23.00	24.75	26.50	27.13	27.63
F		38.88	43.13	48.38	52.88	57.38	61.63	66.19	70.69
G		.38	.44	.44	.50	.50	.50	.50	.50
O		29.50	33.50	37.00	40.50	45.00	49.00	53.00	57.00
Rough Stock Bore	(5)	13.0	15.0	17.0	19.0	21.0	23.0	25.0	27.0
Weight Solid Hubs (LBS)	(2)	9600	12800	18500	23300	30000	37200	44300	52000
Grease Weight (LB-OZ.)		75	90	125	150	175	190	210	225
(3) Volume (Pints)		80	96	134	161	187	203	225	241

Notes:

- (1) Speed limits are recommendations based on experience and are intended as a guide only. Consult SCI for speeds higher than those listed.
- (2) Weights are for full flex couplings. Weights are approximate.
- (3) Lubrication values are for full flex couplings.
- (4) Maximum angular misalignment 1/2° per gear mesh.
Applications in excess of 1/2° misalignment per flex half coupling should be referred to SCI.
- (5) For smaller minimum bore sizes consult SCI.
- (6) Refer to Data Sheet DS110 for service factors.
- (7) Refer to reverse side of data sheet for sizes 8 to 15.


MAGZA
 DIST. AUTORIZADO

 MEX (55) 53 63 23 31 MTY (81) 83 54 10 18
 QRO (442) 1 95 72 60 ventas@industrialmagza.com