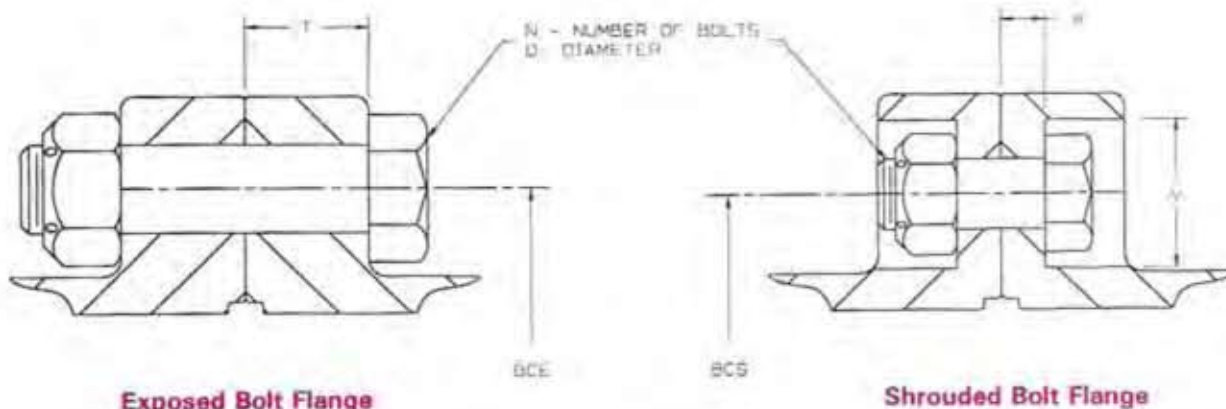


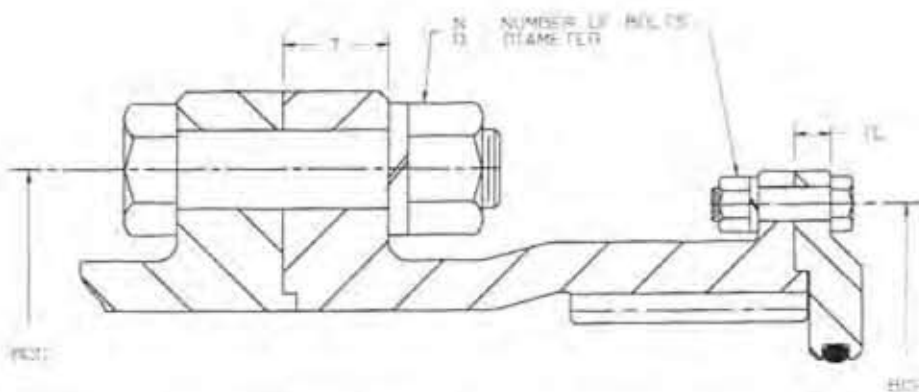
POWERTORK®

DATA SHEET DS114 REV. 03

Series "F" Flange Details.



Series F	Size	1	1½	2	2½	3	3½	4	4½	5	5½	6	7
	T	.56	.75	.75	.88	.88	1.13	1.13	1.13	1.50	.94	1.00	1.13
Exposed Bolt	BCE	3.750	4.813	5.875	7.125	8.125	9.500	11.000	12.000	13.500	14.500	15.750	18.250
	N	6	8	6	6	8	8	8	10	8	14	14	16
	D	1/4"	3/8"	1/2"	5/8"	5/8"	3/4"	3/4"	3/4"	7/8"	7/8"	7/8"	1"
Shrouded Bolt	BCS	3.750	4.813	5.813	7.000	8.000	9.281	10.625	11.750	13.188	-	-	-
	N	6	8	10	10	12	12	14	14	14	-	-	-
	D	1/4"	3/8"	3/8"	1/2"	1/2"	5/8"	5/8"	5/8"	3/4"	-	-	-
	V	.64	.88	.88	1.06	1.06	1.31	1.31	1.31	1.56	-	-	-
	W	.25	.25	.25	.31	.31	.38	.38	.38	.56	-	-	-



Series F	Size	8	9	10	11	12	13	14	15	16	18	20	22	24	26	28	30	
Center Flange	T	1.31	1.44	1.75	2.00	2.13	2.19	2.25	2.25	2.38	2.50	2.75	2.88	3.00	3.13	3.25	3.38	
	BCC	20.750	23.250	25.250	27.500	30.000	32.250	34.500	36.75	39.000	43.250	48.750	53.500	58.250	62.500	67.250	71.500	
	N	16	18	18	18	18	18	18	20	20	22	22	22	22	22	24	22	24
	D	1-1/8"	1-1/4"	1-3/8"	1-1/2"	1-1/2"	1-5/8"	1-3/4"	1-3/4"	2"	2"	2-1/4"	2-1/2"	2-3/4"	2-3/4"	3"	3"	
End Ring Flange	TE	.56	.69	.69	.69	.81	.81	.81	.88	.88	.88	1.25	1.25	1.38	1.38	1.50	1.50	
	BCR	19.375	21.750	23.875	26.063	28.313	30.500	32.625	35.000	37.125	41.375	46.250	50.750	55.000	59.250	63.688	68.188	
	N	10	12	12	12	12	12	14	14	14	14	16	16	16	18	16	18	
	D	1/2"	5/8"	5/8"	5/8"	3/4"	3/4"	3/4"	7/8"	7/8"	7/8"	1"	1"	1-1/8"	1-1/8"	1-1/4"	1-1/4"	



INDUSTRIAL MAGZA
DIST. AUTORIZADO

MEX (55) 53 63 23 31 MTY (81) 83 54 10 18
QRO (442) 1 95 72 60 ventas@industrialmagza.com