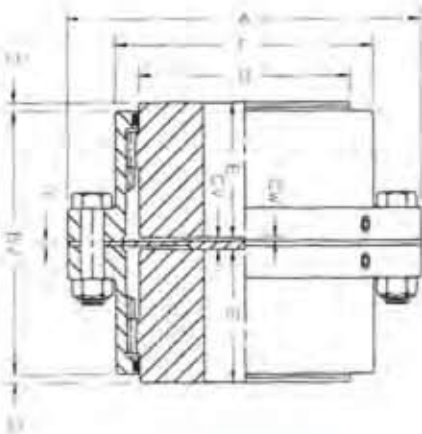


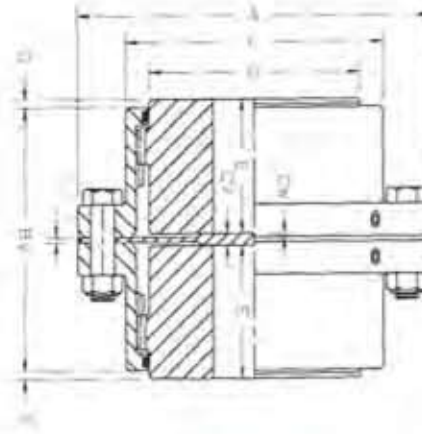
POWERTORK®

DATA SHEET DS118 REV. 04

Series "F" Full Flex Vertical Gear Coupling.



**Non Supported
Upper Shaft**



**Supported
Upper Shaft**

Series F		Size	1	1½	2	2½	3	3½	4	4½	5	5½	6	7
Rating (HP/100 RPM)	(2)		15.5	31	51	90	152	240	380	500	710	925	1200	1850
Torque Capacity (IN-LBS x 10³)			9.77	19.5	32.1	56.7	96	151	240	315	447	583	756	1166
Maximum Speed (RPM)	(1)		10800	8800	8300	7670	7150	6330	5670	5160	4650	4350	3820	3150
Flex Hub	Maximum Bore		1.63	2.19	2.75	3.50	4.00	4.50	5.50	6.00	6.88	7.75	8.75	10.38
	Standard Keyway		3/8 x 3/16	1/2 x 1/4	5/8 x 5/16	7/8 x 7/16	1 x 1/2	1 x 1/2	1-1/4 x 5/8	1-1/2 x 3/4	1-3/4 x 3/4	2 x 3/4	2 x 3/4	2-1/2 x 7/8
	Maximum Bore		1.75	2.31	2.88	3.75	4.38	5.00	5.88	6.50	7.13	8.00	9.00	10.63
	Reduced Depth Keyway		3/8 x 1/8	5/8 x 3/16	3/4 x 3/16	7/8 x 5/16	1 x 5/16	1-1/4 x 3/8	1-1/2 x 1/2	1-1/2 x 1/2	1-3/4 x 5/8	2 x 5/8	2 x 5/8	2-1/2 x 3/4
Parallel Offset Capacity			.056	.069	.089	.108	.128	.153	.176	.201	.229	.256	.255	.301
A			4.56	6.00	7.00	8.38	9.44	11.00	12.50	13.63	15.31	16.75	18.00	20.75
BV			3.44	4.00	4.97	6.13	7.06	8.56	9.53	10.69	12.00	13.38	13.56	15.50
CV			.25	.25	.25	.31	.31	.44	.44	.50	.50	.56	.56	.69
CW			.06	.06	.06	.09	.09	.13	.13	.16	.16	.16	.16	.19
E			1.69	1.94	2.44	3.03	3.59	4.19	4.75	5.31	6.03	6.63	7.41	8.69
F			3.11	3.91	4.88	5.91	6.88	7.91	9.25	10.31	11.56	12.59	13.88	16.09
G			.09	.06	.06	.13	.22	.13	.20	.22	.28	.22	.91	1.25
O			2.36	3.05	3.97	4.88	5.63	6.50	7.75	8.50	9.50	10.50	11.63	13.50
T			.13	.13	.13	.13	.13	.19	.19	.19	.19	.25	.25	.31
Rough Stock Bore			-	-	-	-	-	-	2.09	2.25	2.25	2.75	3.00	4.00
Weight Solid Hubs (LBS)		(3)	9.5	19	31.5	61	85.5	136.5	207	276.5	396.5	481.5	664	1014
Grease	Weight (LB-OZ.)		0-1.1	0-2.3	0-5	0-6.5	0-9.5	1-7	1-11	2-11	3-11	5-5	7-12	10-5
	Volume (Pints)	(4)	.06	.06	.25	.60	.86	1.5	1.8	2.9	4.0	5.4	8.2	11.2

Notes:

- (1) Maximum speed without dynamic balancing 60% of values shown. Speed limits are recommendations based on experience and are intended as a guide only. Consult SCI for speeds higher than those listed.
- (2) Load ratings / torque capacities are based on full 1° misalignment per gear mesh. Selection service factors are required. See Data Sheet DS110.
- (3) Weights are for full flex couplings. Weights are approximate.
- (4) Lubrication values are for full flex couplings.
- (5) Maximum angular misalignment 1 1/2° per gear mesh. For optimum performance, combined angular and offset misalignment should not exceed 3/4° per gear mesh. Application requirements in excess of 3/4° misalignment per flex half coupling should be referred to SCI.
- (6) Sizes 5½, 6 and 7 not available in shrouded bolt.



MEX (55) 53 63 23 31 MTY (81) 83 54 10 18
 QRO (442) 1 95 72 60 ventas@industrialmagza.com