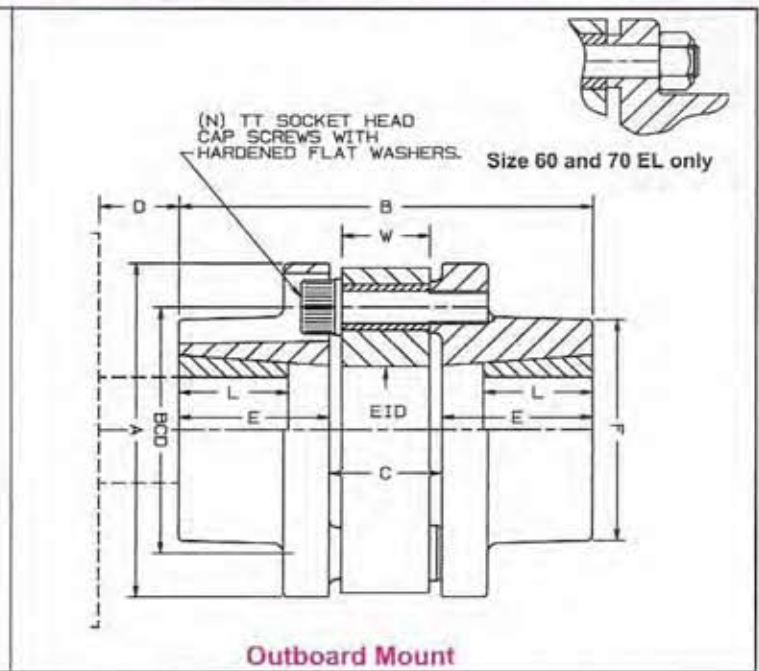
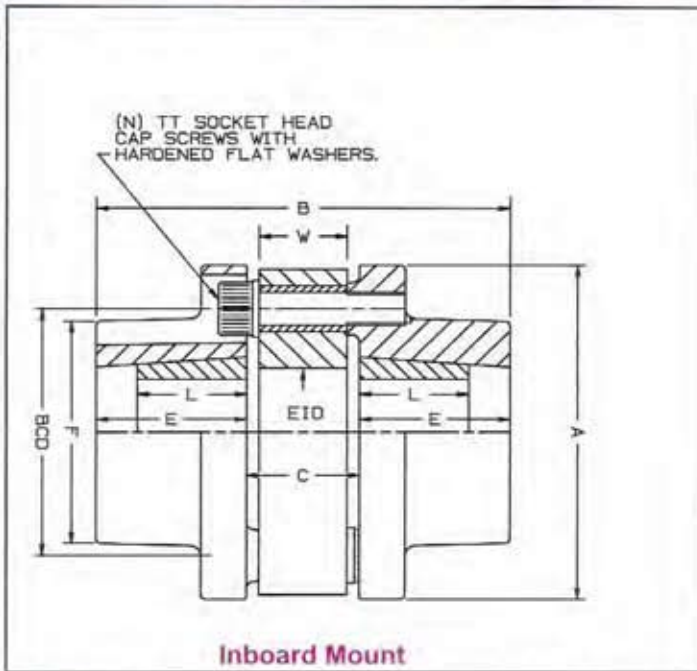


Series "EL" Elastomeric Coupling - Bored for TAPER-LOCK® Bushing



Series EL	Size	20-20	20-40	30-75	30-90	30-115	30-150	40-250	50-350	60-463	70-936
Rating (HP/100 RPM)		1.11	2.22	4.60	5.00	6.39	8.33	13.89	19.70	25.72	52.00
Rating (HP@1800RPM)		20	40	75	90	115	150	250	354	463	936
Torque Capacity (IN LBS x 10 ³)(3)		.700	1.30	2.63	3.15	3.55	3.55	4.30	12.38	16.20	32.77
Maximum Speed (RPM)	(4)	9400	9400	7050	7050	7050	7050	6200	4750	3600	3000
TAPER-LOCK® Bushing number		1108	1108	1215	1215	1215	1215	1615	2012	3030	4040
Bushing Bore Range		1/2 to 1-1/8	1/2 to 1-1/8	1/2 to 1-1/4	1/2 to 1-1/4	1/2 to 1-1/4	1/2 to 1-1/4	1/2 to 1-5/8	1/2 to 2	15/16 to 3	1-7/16 to 4
A		4.00	4.00	5.16	5.16	5.16	5.16	5.91	7.72	10.25	12.75
B		4.42	4.73	5.69	5.69	5.69	5.89	6.73	7.69	10.44	13.44
C		.92	1.23	1.56	1.56	1.56	1.76	2.00	2.19	2.19	2.19
E		1.75	1.75	2.06	2.06	2.06	2.06	2.37	2.75	4.13	5.63
EID		1.54	1.54	1.97	1.97	1.97	1.77	2.16	2.75	4.40	6.61
F		2.75	2.75	3.60	3.60	3.60	3.60	4.18	5.30	6.00	8.00
L		.88	.88	1.50	1.50	1.50	1.50	1.50	1.25	3.00	4.00
BCD		2.953	2.953	3.780	3.780	3.780	3.780	4.331	5.512	7.874	10.276
N		6	6	6	6	6	6	6	6	6	8
TT		M10	M10	M10	M12	M12	M12	M14	M18	M24	M24
W		.63	.94	.70	1.18	1.18	1.38	1.57	1.61	1.42	1.46
Weight Solid Hubs (LBS)		6.5	6.5	14.5	14.5	14.5	14.5	22	39	107	260
Bolt Tightening Torque (FT LBS)		25	25	25	42	42	42	68	150	300	300

Notes:

- (1) Maximum angular misalignment : 3°
- (2) Maximum offset misalignment up to .04"
- (3) Continuous load rating is based on a 1.0 x Safety factor
Maximum coupling peak load rating is 4.0 x continuous load rating
For maximum bushing peak load rating refer to bushing manufacturer
Refer to bushing manufacturers service factor guide
- (4) Maximum speed 60% of value shown without dynamic balancing
- (5) TAPER-LOCK® is a registered trademark of DODGE/Reliance Electric Co
- (6) Space required to remove bushing with short key
- (7) Coupling supplied less bushing

EL-3



MAGZA
DIST. AUTORIZADO

MEX (55) 53 63 23 31
QRO (442) 1 95 72 60

MTY (81) 83 54 10 18

ventas@industrialmagza.com