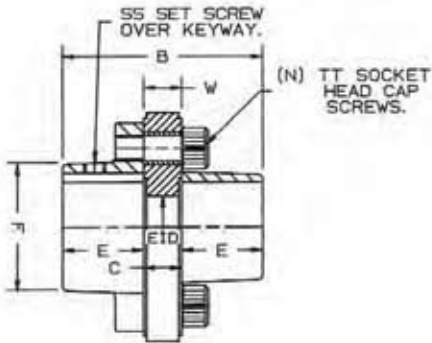
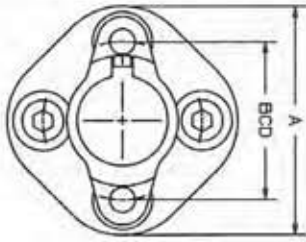


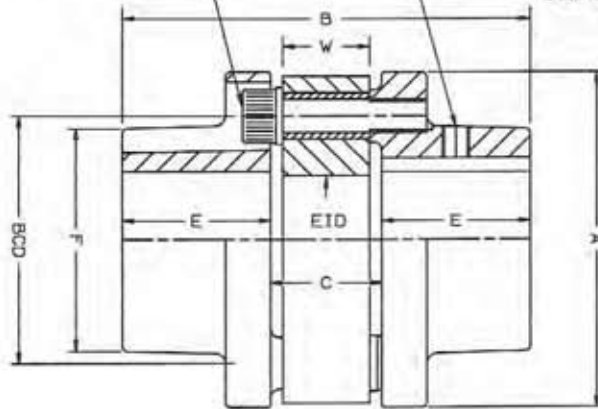
Series "EL" Elastomeric Coupling - Straight Bore.



Size 5 EL Only

(N) TT SOCKET HEAD CAP SCREWS WITH HARDENED FLAT WASHERS.

SS SET SCREW OVER KEYWAY.



Size 60 and 70 EL only

Size 20 EL And Larger

| Series EL | Size | 5-5 | 20-20 | 20-40 | 30-75 | 30-90 | 30-115 | 30-150 | 40-250 | 50-350 | 60-463 | 70-936 |
|--|------|-----------|------------|------------|-----------|-----------|-----------|-----------|------------|------------|---------|-------------|
| Rating (HP/100 RPM) | | .28 | 1.11 | 2.22 | 4.60 | 5.00 | 6.39 | 8.33 | 13.89 | 19.70 | 25.72 | 52.00 |
| Rating (HP@1800RPM) | | 5 | 20 | 40 | 75 | 90 | 115 | 150 | 250 | 354 | 463 | 936 |
| Torque Capacity (IN LBS x 10 ³)(3) | | .175 | .700 | 1.40 | 2.63 | 3.15 | 4.03 | 5.25 | 8.75 | 12.38 | 16.20 | 32.77 |
| Maximum Speed (RPM) | (4) | 12900 | 9400 | 9400 | 7050 | 7050 | 7050 | 7050 | 6200 | 4750 | 3600 | 3000 |
| Maximum Bore | (5) | 1.13 | 1.63 | 1.63 | 2.25 | 2.25 | 2.25 | 2.25 | 2.63 | 3.50 | 4.00 | 5.50 |
| Standard Keyway | (5) | 1/4 x 1/8 | 3/8 x 3/16 | 3/8 x 3/16 | 1/2 x 1/4 | 1/2 x 1/4 | 1/2 x 1/4 | 1/2 x 1/4 | 5/8 x 5/16 | 7/8 x 7/16 | 1 x 1/2 | 1-1/4 x 5/8 |
| A | | 2.85 | 4.00 | 4.00 | 5.16 | 5.16 | 5.16 | 5.16 | 5.91 | 7.72 | 10.25 | 12.75 |
| B | | 2.47 | 4.42 | 4.73 | 5.69 | 5.69 | 5.69 | 5.89 | 6.73 | 7.69 | 10.44 | 13.44 |
| C | | .47 | .92 | 1.23 | 1.56 | 1.56 | 1.56 | 1.76 | 2.00 | 2.19 | 2.19 | 2.19 |
| E | | 1.00 | 1.75 | 1.75 | 2.06 | 2.06 | 2.06 | 2.06 | 2.37 | 2.75 | 4.13 | 5.63 |
| EID | | .77 | 1.54 | 1.54 | 1.97 | 1.97 | 1.97 | 1.77 | 2.16 | 2.75 | 4.40 | 6.61 |
| F | | 1.65 | 2.75 | 2.75 | 3.60 | 3.60 | 3.60 | 3.60 | 4.18 | 5.30 | 6.00 | 8.00 |
| BCD | | 1.982 | 2.953 | 2.953 | 3.780 | 3.780 | 3.780 | 3.780 | 4.331 | 5.512 | 7.874 | 10.276 |
| SS | | M4 | M6 | M6 | M8 | M8 | M8 | M8 | M8 | M12 | M16 | M16 |
| N | | 4 | 6 | 6 | 6 | 6 | 6 | 6 | 6 | 6 | 6 | 8 |
| TT | | M8 | M10 | M10 | M10 | M12 | M12 | M12 | M14 | M18 | M24 | M24 |
| W | | .47 | .63 | .94 | .70 | 1.18 | 1.18 | 1.38 | 1.57 | 1.61 | 1.42 | 1.46 |
| Rough Stock Bore | | - | - | - | - | - | - | - | - | 1.40 | 1.95 | 2.38 |
| Weight Solid Hubs (LBS) | | 1.25 | 6.5 | 6.5 | 14.5 | 14.5 | 14.5 | 14.5 | 22 | 39 | 107 | 260 |
| Bolt Tightening Torque (FT LBS) | | 15 | 25 | 25 | 25 | 42 | 42 | 42 | 68 | 150 | 300 | 300 |

Notes:

- (1) Maximum angular misalignment : Size 5 EL 8°, Size 20 EL and larger 3°
- (2) Maximum offset misalignment up to .04'
- (3) Continuous load rating is based on a 1.0 x Safety factor
Maximum peak load rating is 4.0 x continuous load rating
- (4) Maximum speed 60% of value shown without dynamic balancing
- (5) Coupling furnished with Class 1 clearance fit bores with one keyway and one set screw over the keyway per hub unless otherwise specified
Finish bores and keyways are per AGMA 9002-A86 commercial standards

EL-1



INDUSTRIAL MAGZA
DIST. AUTORIZADO

MEX (55) 53 63 23 31
QRO (442) 1 95 72 60

MTY (81) 83 54 10 18
ventas@industrialmagza.com