

ZERO-MAX

CD[®] Couplings
SERIES A1C



**DISTRIBUIDOR
AUTORIZADO**

MEX (55) 53 63 23 31
QRO (442) 1 95 72 60

MTY (81) 83 54 10 18
ventas@industrialmagza.com

ZERO-MAX CD® COUPLINGS SERIES A1C

- For today's most demanding servo motor and motion control applications. CD Couplings Series A1C are precise, robust, and available in sizes and models for every application.
- High torsional stiffness and high dynamic load capacity ensure reliable machine operation.
- Precise positioning under high speed reversing loads without fatigue for reliable 24/7 operation.
- Unique patented composite disc design provides misalignment capacity and long operational life.
- Clamp style hub design provides a superior method of shaft engagement.
- Eco-Friendly, adapted to RoHS Directive with no banned substances.



These next-generation CD Couplings Series A1C allow you to transmit high horsepower in a small envelope. They are ideal for cyclic applications where speed and repeatable accuracy are critical to keep 24/7 systems going.

CD Couplings Series A1C withstand the punishment and stress of a servo motor. In comparison, other couplings may have high torsional stiffness specifications; however, they can be too brittle to withstand the punishment of high speed reversing applications.

The working part of a CD Coupling Series A1C is made of high precision composite material. This patented design has high torsional stiffness, and yet allows for misalignment in high stress applications. CD Couplings Series A1C have excellent chemical and moisture resistance and operate without maintenance in hostile environments.



Standard and Custom CD Couplings Series A1C are available for every application. Do you need higher misalignment and greater torque capacity in your coupling? Need more flexibility and torsional stiffness? Need a very large bore diameter coupling? Or a long spacer coupling? Zero-Max CD Couplings Series A1C are available in a full range of styles, models and sizes to meet those needs. Zero-Max will design and build a custom CD Coupling Series A1C to handle your unique application.



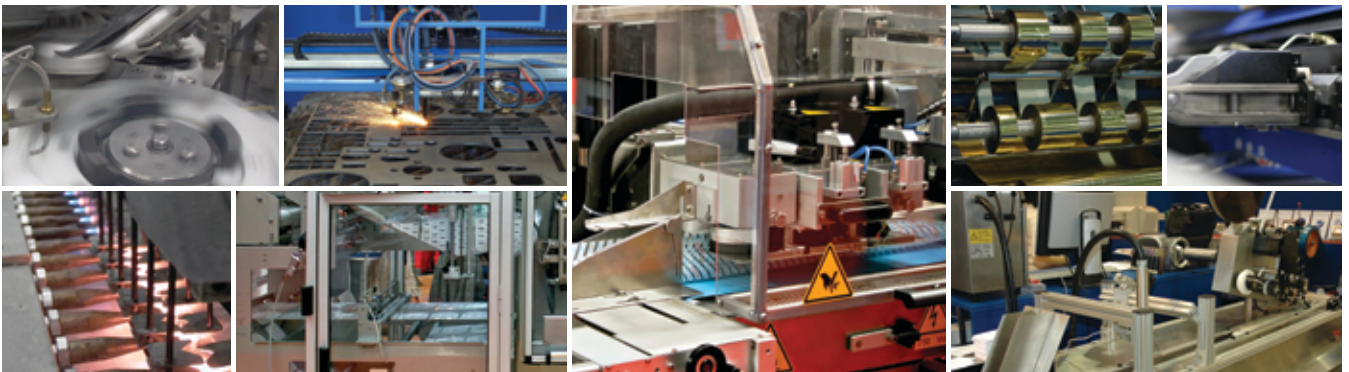
DISTRIBUIDOR
AUTORIZADO

MEX (55) 53 63 23 31 MTY (81) 83 54 10 18
QRO (442) 1 95 72 60 ventas@industrialmagza.com



CD® COUPLINGS SERIES A1C FOR THE MOST DIFFICULT MOTION APPLICATIONS

- Ideal for high precision applications including packaging machines, pick and place systems, printing machinery, machine tools and most systems using servo motors.
- Operating temperature range is -70° to +250° F (-57° to +121° C).
- Composite discs are resistant to many chemicals.
- Maintenance free.
- Hubs are machined to a high level of concentricity for smooth and quiet operation.
- RoHS compliant – manufactured of RoHS compliant materials and contains no banned substances.



DISTRIBUIDOR
AUTORIZADO

MEX (55) 53 63 23 31 MTY (81) 83 54 10 18
QRO (442) 1 95 72 60 ventas@industrialmagza.com

CD® COUPLINGS **SINGLE FLEX** ALUMINUM

CD Coupling Series A1C has very low weight and inertia, making it an excellent choice for servo motor applications. The unique design delivers two features that are not often found in a precision coupling. High torsional stiffness and high durability!

The compact size, low inertia, and clamping system enable this coupling to fit into many applications.

- Zero Backlash
- Torsionally Stiff
- Excellent for Reversing Loads
- Smooth Operation at High Speeds
- Compact



Performance Information

| Model | Continuous Torque | Peak Torque | Torsional Stiffness | Maximum Speed | Maximum Misalignments | | | Weight | | Inertia | |
|----------|-------------------|-------------|---------------------|---------------|-----------------------|----------|-------|----------|----------|------------------------------------|------------------------------------|
| | | | | | Angular | Parallel | Axial | Max Bore | Min Bore | Max Bore | Min Bore |
| | | | | | Degrees | mm | mm | kg | kg | 10 ⁻³ kg-m ² | 10 ⁻³ kg-m ² |
| | Nm | Nm | Nm/Rad | RPM | | | | | | | |
| 6A18-A1C | 20 | 40 | 11,650 | 15,000 | 2 | 0.1 | 0.8 | 0.2 | 0.26 | 0.088 | 0.095 |
| 6A22-A1C | 30 | 60 | 17,352 | 13,500 | 2 | 0.15 | 0.9 | 0.33 | 0.41 | 0.19 | 0.21 |
| 6A26-A1C | 53 | 106 | 20,100 | 11,500 | 2 | 0.2 | 1.1 | 0.46 | 0.6 | 0.35 | 0.37 |
| 6A30-A1C | 90 | 180 | 42,976 | 9,500 | 2 | 0.25 | 1.3 | 0.76 | 0.94 | 0.78 | 0.82 |
| 6A37-A1C | 181 | 362 | 67,167 | 8,000 | 2 | 0.33 | 1.8 | 1.59 | 2.04 | 2.53 | 2.71 |
| 6A45-A1C | 282 | 564 | 123,909 | 6,700 | 2 | 0.38 | 2.3 | 3 | 3.9 | 7.16 | 7.71 |

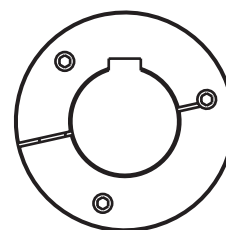
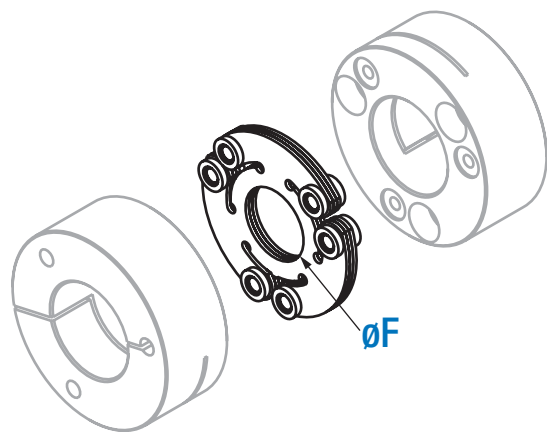
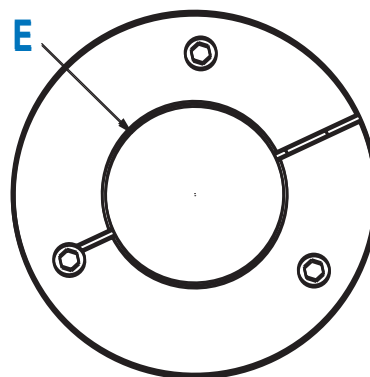
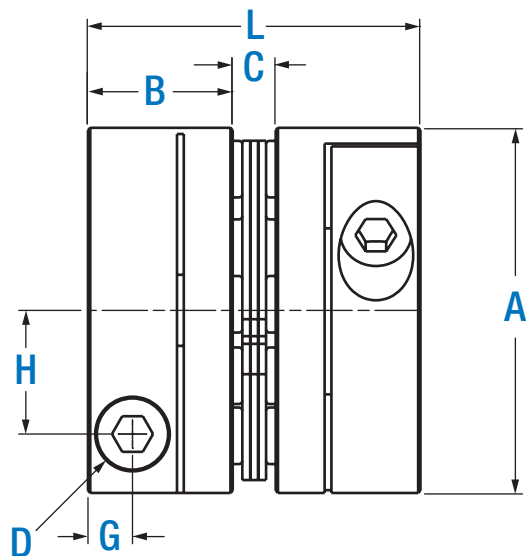
- Consult factory for speeds higher than those listed and balancing requirements, if necessary.
- Consult factory for higher torque and higher torsional stiffness couplings.
- Available with or without keyway on clamp style hubs.



**DISTRIBUIDOR
AUTORIZADO**

MEX (55) 53 63 23 31 MTY (81) 83 54 10 18
QRO (442) 1 95 72 60 ventas@industrialmagza.com

CD® COUPLINGS **SINGLE FLEX** ALUMINUM



Note: Typical keyway placement

Dimensional Information

| Model | A | B | C | D | | E (bore) | | F | G | H | L |
|----------|------|------|-------|------|--------|----------|-----|-------|-------|------|-------|
| | | | | Bolt | Torque | Min | Max | | | | |
| | mm | mm | mm | M | Nm | mm | mm | mm | mm | mm | mm |
| 6A18-A1C | 53 | 22.5 | 5.49 | M6 | 13 | 9 | 27 | 20.1 | 7.25 | 18 | 50.5 |
| 6A22-A1C | 62 | 26 | 5.74 | M6 | 13 | 16 | 31 | 24.9 | 7.24 | 22 | 57.7 |
| 6A26-A1C | 69.5 | 29.5 | 6.25 | M8 | 32 | 14 | 36 | 25.4 | 9.14 | 24 | 65.2 |
| 6A30-A1C | 82 | 32.5 | 9.65 | M10 | 58 | 16 | 40 | 30.71 | 10 | 27.8 | 74.7 |
| 6A37-A1C | 101 | 46 | 11.23 | M12 | 100 | 18 | 52 | 38.4 | 12.7 | 36 | 103.2 |
| 6A45-A1C | 123 | 60 | 12.75 | M16 | 245 | 24 | 65 | 46 | 16.95 | 43.5 | 132.8 |



DISTRIBUIDOR
AUTORIZADO

MEX (55) 53 63 23 31 MTY (81) 83 54 10 18
QRO (442) 1 95 72 60 ventas@industrialmagza.com

CD® COUPLINGS **DOUBLE FLEX** ALUMINUM

CD Coupling Series A1C has very low weight and inertia, making it an excellent choice for servo motor applications. The unique design delivers two features that are not often found in a precision coupling. High torsional stiffness and high durability!



The compact size, low inertia, and clamping system enable this coupling to fit into many applications.

- Zero Backlash
- Torsionally Stiff
- Excellent for Reversing Loads
- Smooth Operation at High Speeds
- Compact

Performance Information

| Model | Continuous Torque | Peak Torque | Torsional Stiffness | Maximum Speed | Maximum Misalignments | | | Weight | | Inertia | |
|----------|-------------------|-------------|---------------------|---------------|-----------------------|----------|-------|----------|----------|------------------------------------|------------------------------------|
| | | | | | Angular | Parallel | Axial | Max Bore | Min Bore | Max Bore | Min Bore |
| | Nm | Nm | Nm/Rad | RPM | Degrees | mm | mm | kg | kg | 10 ⁻³ kg-m ² | 10 ⁻³ kg-m ² |
| 6P18-A1C | 20 | 40 | 5,500 | 15,000 | 2 | 0.44 | 1.6 | 0.25 | 0.30 | 0.30 | 0.11 |
| 6P22-A1C | 30 | 60 | 8,482 | 13,500 | 2 | 0.58 | 1.8 | 0.39 | 0.47 | 0.22 | 0.24 |
| 6P26-A1C | 53 | 106 | 9,712 | 11,500 | 2 | 0.55 | 2.2 | 0.54 | 0.65 | 0.41 | 0.43 |
| 6P30-A1C | 90 | 180 | 20,923 | 9,500 | 2 | 0.85 | 2.6 | 0.97 | 1.14 | 1.00 | 1.10 |
| 6P37-A1C | 181 | 362 | 32,700 | 7,900 | 2 | 1.00 | 3.6 | 2.03 | 2.43 | 3.17 | 3.31 |
| 6P45-A1C | 282 | 564 | 60,324 | 6,700 | 2 | 1.24 | 4.6 | 3.7 | 4.6 | 8.50 | 9.00 |

- Consult factory for speeds higher than those listed and balancing requirements, if necessary.
- Consult factory for higher torque and higher torsional stiffness couplings.
- Available with or without keyway on clamp style hubs.

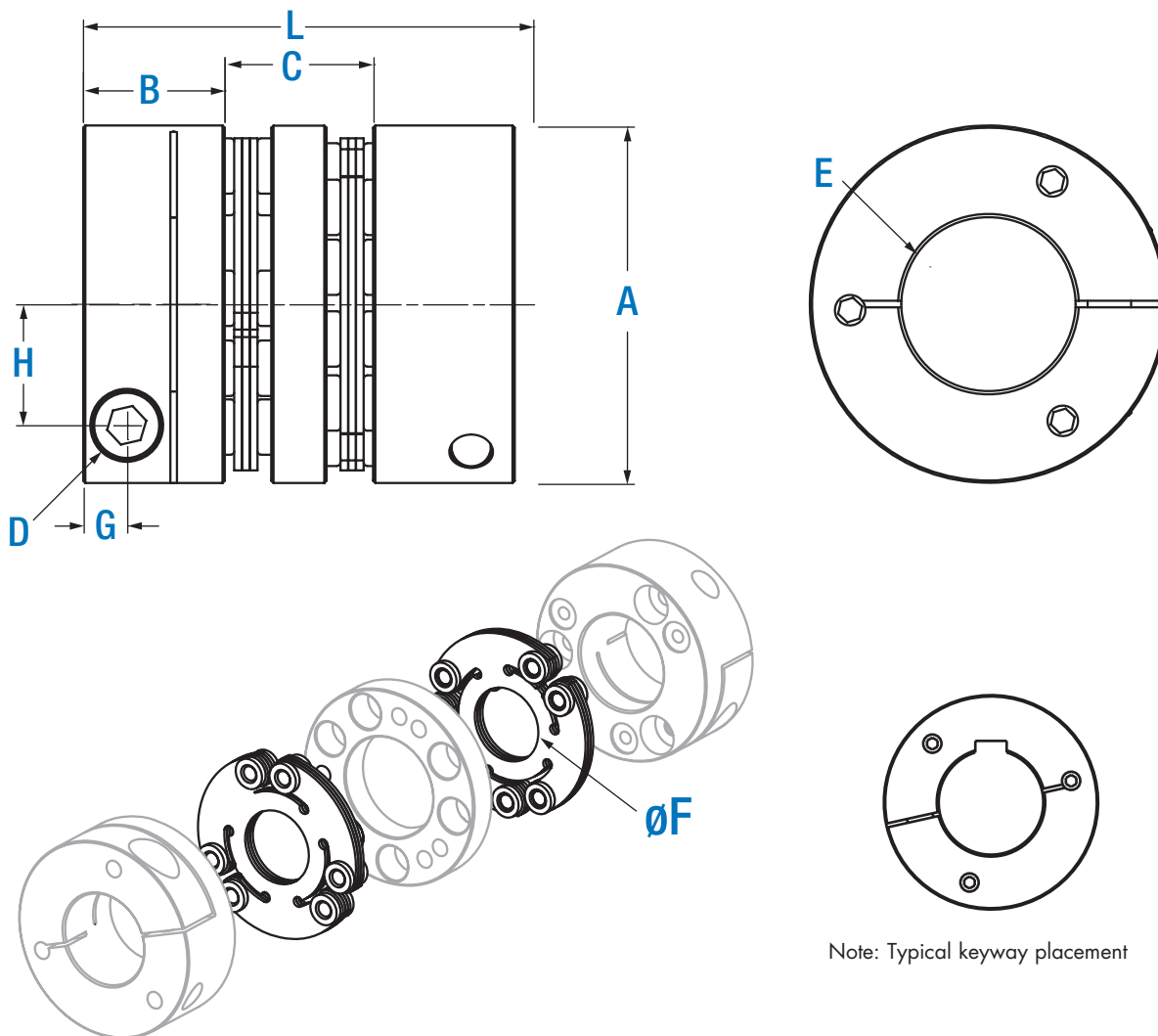


**DISTRIBUIDOR
AUTORIZADO**

MEX (55) 53 63 23 31
QRO (442) 1 95 72 60

MTY (81) 83 54 10 18
ventas@industrialmagza.com

CD® COUPLINGS **DOUBLE FLEX** ALUMINUM



Dimensional Information

| Model | A | B | C | D | | E (bore) | | F | G | H | L |
|----------|------|------|----|------|--------|----------|-----|------|------|------|-----|
| | | | | Bolt | Torque | Min | Max | | | | |
| | mm | mm | mm | M | Nm | mm | mm | mm | mm | mm | mm |
| 6P18-A1C | 53 | 22.5 | 18 | M6 | 13 | 8 | 26 | 20.1 | 7 | 18 | 63 |
| 6P22-A1C | 62 | 26 | 23 | M6 | 13 | 12 | 31 | 24.9 | 7 | 22 | 75 |
| 6P26-A1C | 69.5 | 29.5 | 22 | M8 | 32 | 14 | 35 | 25.4 | 9.14 | 24 | 81 |
| 6P30-A1C | 82 | 32.5 | 34 | M10 | 58 | 16 | 40 | 30.7 | 10 | 27.8 | 99 |
| 6P37-A1C | 101 | 46 | 42 | M12 | 100 | 18 | 51 | 38.4 | 12.7 | 36 | 134 |
| 6P45-A1C | 123 | 60 | 48 | M16 | 245 | 24 | 65 | 46 | 16.2 | 43.5 | 168 |



DISTRIBUIDOR
AUTORIZADO

MEX (55) 53 63 23 31 MTY (81) 83 54 10 18
QRO (442) 1 95 72 60 ventas@industrialmagza.com

Feed Screw Systems

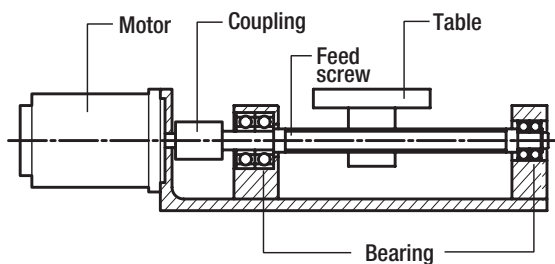
1. Oscillation phenomena of servomotors

If the resonant frequency of the entire feed-screw system is under 400~500Hz, oscillation may occur depending on the gain adjustment of the servomotor. The problems can be avoided by raising the resonant frequency of the mechanical system or adjusting the tuning function (filter function) of the servomotor.

Contact us for unclear points concerning oscillation phenomena of servomotors.

How to evaluate the resonant frequency of feed-screw system

1. Select the coupling according to the normal operating torque and maximum torque of the servomotor/stepping motor.
2. In the following feed-screw system, evaluate the entire resonant frequency: Nf from the torsional spring constant: K of the coupling and feed screw, the moment of inertia: J1 of the driving side and the moment of inertia: J2 of the driven side.



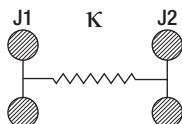
$$Nf = \frac{1}{2\pi} \sqrt{K \left(\frac{1}{J1} + \frac{1}{J2} \right)}$$

Nf: Eigenfrequency of the entire feed-screw system [Hz]

K: Torsional spring constant of the coupling and feed screw [N · m/rad]

J1: Moment of inertia of the driving side

J2: Moment of inertia of the driven side



Selection Procedure

1. Calculate torque Ta applied to the coupling based on the motor output P and coupling operating rotation speed n.

$$Ta[N \cdot m] = 9550 \times \frac{P [kW]}{n [min^{-1}]}$$

2. Calculate corrected torque Td applied to the coupling after deciding the service factor K based on load conditions.

$$Td = Ta \times K$$

In servomotor drive, multiply the service factor K=1.2~1.5 by the maximum torque of servomotor Ts.

$$Td = Ts \times (1.2 \sim 1.5)$$

3. Select a coupling size with permissible torque Tn that becomes greater than the corrected torque Td.

$$Tn \geq Td$$

4. Depending on the bore diameters, the coupling permissible torque may be limited. Refer to the "Specification" and "Standard bore diameter".

5. Confirm if the required shaft diameter does not exceed the maximum bore diameter of the selected size.

Custom Designs Available Upon Request

If our standard line of couplings will not exactly fit your system needs, contact us for a custom design.

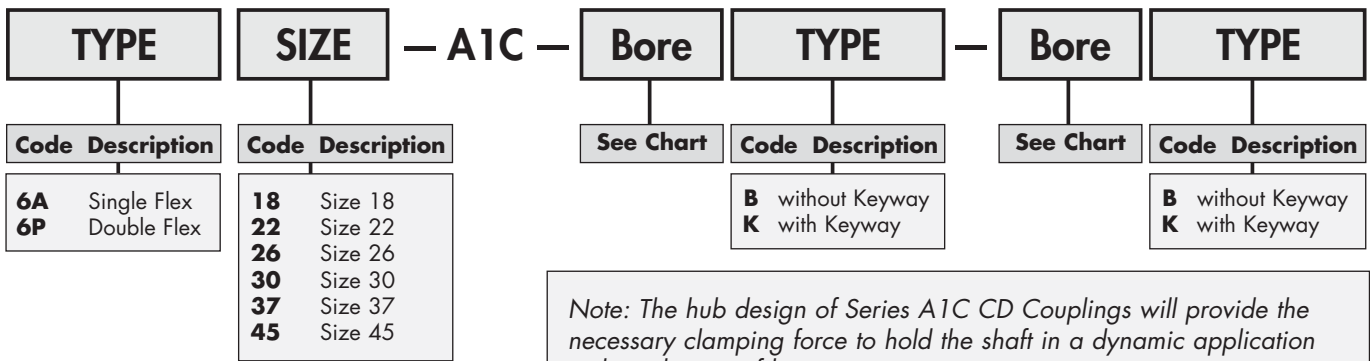
- Custom bores
- Ultra high speeds
- Special finishes
- Special Lengths
- Designed for operation in special environments



DISTRIBUIDOR
AUTORIZADO

MEX (55) 53 63 23 31 MTY (81) 83 54 10 18
QRO (442) 1 95 72 60 ventas@industrialmagza.com

Part Numbering Structure



Note: The hub design of Series A1C CD Couplings will provide the necessary clamping force to hold the shaft in a dynamic application without the use of keyways.

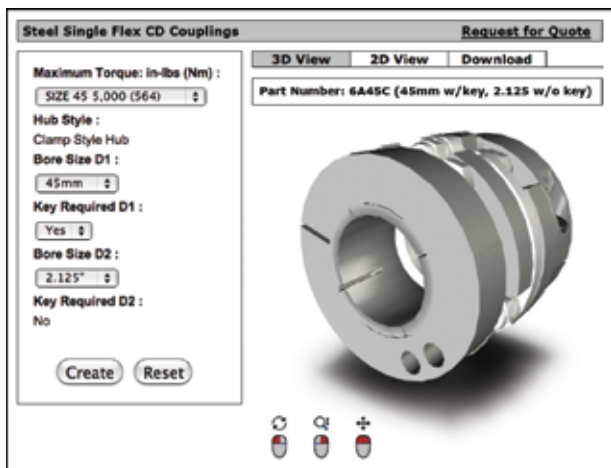
Example:
6A30-A1C-20B-28B

- Single Flex
- Size 30
- 20mm bore without keyway x 28mm bore without keyway

Bore Size

| Model | Bore (mm) | 9 | 10 | 11 | 12 | 13 | 14 | 15 | 16 | 17 | 18 | 19 | 20 | 22 | 24 | 25 | 28 | 30 | 32 | 35 | 38 | 40 | 42 | 45 | 48 | 50 | 52 | 55 | 58 | 60 | 62 | 63 | 65 | |
|----------|-----------|---|----|----|----|----|----|----|----|----|----|----|----|----|----|----|----|----|----|----|----|----|----|----|----|----|----|----|----|----|----|----|----|--|
| 6A18-A1C | | ● | ● | ● | ● | ● | ● | ● | ● | ● | ● | ● | ● | ● | ● | ● | | | | | | | | | | | | | | | | | | |
| 6P18-A1C | | | | | | | | | | | | | | | | | | | | | | | | | | | | | | | | | | |
| 6A22-A1C | | | | | | | | | | | | | | | | | | | | | | | | | | | | | | | | | | |
| 6P22-A1C | | | | | | | | | | | | | | | | | | | | | | | | | | | | | | | | | | |
| 6A26-A1C | | | | | | | | | | | | | | | | | | | | | | | | | | | | | | | | | | |
| 6P26-A1C | | | | | | | | | | | | | | | | | | | | | | | | | | | | | | | | | | |
| 6A30-A1C | | | | | | | | | | | | | | | | | | | | | | | | | | | | | | | | | | |
| 6P30-A1C | | | | | | | | | | | | | | | | | | | | | | | | | | | | | | | | | | |
| 6A37-A1C | | | | | | | | | | | | | | | | | | | | | | | | | | | | | | | | | | |
| 6P37-A1C | | | | | | | | | | | | | | | | | | | | | | | | | | | | | | | | | | |
| 6A45-A1C | | | | | | | | | | | | | | | | | | | | | | | | | | | | | | | | | | |
| 6P45-A1C | | | | | | | | | | | | | | | | | | | | | | | | | | | | | | | | | | |

●: The coupling will transmit full peak torque on a shaft without a keyway. Please contact the factory for additional bores



New Zero-Max Configurable 3D CAD Downloads.
www.zero-max.com



DISTRIBUIDOR AUTORIZADO

MEX (55) 53 63 23 31 MTY (81) 83 54 10 18
 QRO (442) 1 95 72 60 ventas@industrialmagza.com

GLOBAL SUPPORT



**DISTRIBUIDOR
AUTORIZADO**

MEX (55) 53 63 23 31
QRO (442) 1 95 72 60

MTY (81) 83 54 10 18
ventas@industrialmagza.com

////// ZERO-MAX®

Haarup Tvaer Vej # 1, Silkeborg, DK8600, Denmark
Phone: +45 8681 2288 Fax +45 8681 5388
www.zero-max.dk Email ext@zero-max.dk