

Standard Inch Series Bores And Keyways

Finished Straight Bores For Standard AGMA Class 1 Clearance Fit

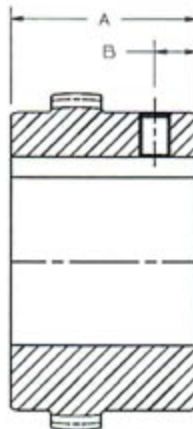
Finished Straight Bores For Standard AGMA Interference Fit

Nominal Shaft Diameter	Bore Diameter	Keyway (Width x Depth)	Keyway Radius
1/2	.500 / .501	1/8 x 1/16	1/64
9/16	.5625 / .5635		
5/8	.625 / .626	3/16 x 3/32	1/64
3/4	.750 / .751		
13/16	.8125 / .8135		
7/8	.875 / .876		
15/16	.9375 / .9385	1/4 x 1/8	1/64
1	1.000 / 1.001		
1-1/16	1.0625 / 1.0635		
1-1/8	1.125 / 1.126		
1-3/16	1.1875 / 1.1885		
1-1/4	1.250 / 1.251		
1-5/16	1.3125 / 1.3135	5/16 x 5/32	1/32
1-3/8	1.375 / 1.376		
1-7/16	1.4375 / 1.4385	3/8 x 3/16	1/32
1-1/2	1.500 / 1.501		
1-5/8	1.625 / 1.626		
1-11/16	1.6875 / 1.6885		
1-3/4	1.750 / 1.751		
1-7/8	1.875 / 1.876	1/2 x 1/4	1/32
1-15/16	1.9375 / 1.9385		
2	2.000 / 2.001		
2-1/8	2.125 / 2.126		
2-3/16	2.1875 / 2.189		
2-1/4	2.250 / 2.2515		
2-3/8	2.375 / 2.3765	5/8 x 5/16	1/16
2-7/16	2.4375 / 2.439		
2-1/2	2.500 / 2.5015		
2-5/8	2.625 / 2.6265		
2-3/4	2.750 / 2.7515		
2-7/8	2.875 / 2.8765	3/4 x 3/8	1/16
2-15/16	2.9375 / 2.939		
3	3.000 / 3.0015		
3-1/8	3.125 / 3.1265		
3-3/16	3.1875 / 3.189		
3-1/4	3.250 / 3.2515		
3-3/8	3.375 / 3.3765	7/8 x 7/16	1/16
3-7/16	3.4375 / 3.439		
3-1/2	3.500 / 3.5015		
3-5/8	3.625 / 3.6265		
3-3/4	3.750 / 3.7515		
3-7/8	3.875 / 3.8765	1 x 1/2	1/16
4	4.000 / 4.0015		
4-1/4	4.250 / 4.2515		
4-3/8	4.375 / 4.377		
4-1/2	4.500 / 4.502		
4-3/4	4.750 / 4.752	1-1/4 x 5/8	1/8
5	5.000 / 5.002		
5-1/4	5.250 / 5.252		
5-3/8	5.375 / 5.377		

Nominal Shaft Diameter Over to Including	Bore Dia. Equals Nominal Shaft Diameter minus	Bore Tolerance	Keyway (Width x Depth)	Keyway Radius
9/16 to 7/8	.001	+.0005	3/16 x 3/32	1/64
7/8 to 1-1/4	.001	+.0005	1/4 x 1/8	1/64
1-1/4 to 1-3/8	.001	+.0005	5/16 x 5/32	1/32
1-3/8 to 1-1/2	.001	+.0005	3/8 x 3/16	1/32
1-1/2 to 1-3/4	.002	+.001		
1-3/4 to 2-1/4	.002	+.001	1/2 x 1/4	1/32
2-1/4 to 2-3/4	.002	+.001	5/8 x 5/16	1/16
2-3/4 to 3	.002	+.001	3/4 x 3/8	1/16
3 to 3-1/4	.003	+.0015		
3-1/4 to 3-3/4	.003	+.0015	7/8 x 7/16	1/16
3-3/4 to 4	.003	+.0015	1 x 1/2	1/16
4 to 4-1/2	.0035	+.0015		
4-1/2 to 5	.0035	+.0015	1-1/4 x 5/8	1/8
5 to 5-1/2	.004	+.0015		
5-1/2 to 6	.004	+.0015	1-1/2 x 3/4	1/8
6 to 6-1/2	.005	+.002		
6-1/2 to 7	.005	+.002	1-3/4 x 3/4	1/8
7 to 7-1/2	.0055	+.002		
7-1/2 to 8	.0055	+.002	2 x 3/4	1/8
8 to 9	.006	+.002		
9 to 10	.0065	+.002	2-1/2 x 7/8	1/8
10 to 11	.0075	+.002		
11 to 12	.008	+.002	3 x 1	3/16
12 to 13	.009	+.0025		
13 to 14	.0095	+.0025	3-1/2 x 1-1/4	3/16
14 to 15	.010	+.0025		
15 to 16	.0105	+.0025	4 x 1-1/2	(Note 3)
16 to 17	.011	+.0025		
17 to 18	.0115	+.0025		
18 to 19	.012	+.0025	5 x 1-3/4	(Note 3)
19 to 20	.0125	+.0025		

Set Screw Sizes For Clearance Fit Bores

Hub Size	A	B	Set Screw
6 S	1.19	.38	1/4"-20 UNC
8 S	1.41	.38	
10 S	1.56	.38	
1 F	1.69	.38	
12 S	1.78	.50	3/8"-16 UNC
1 1/2 F or 15 S	1.94	.38	
2 F or 20 S	2.44	.50	
2 1/2 F or 25 S	3.03	.63	
3 F or 30 S	3.59	.75	1/2"-13 UNC
3 1/2 F or 35 S	4.19	.88	5/8"-11 UNC
4 F or 40 S	4.75	1.63	
4 1/2 F or 45 S	5.31	1.63	3/4" 10 UNC
5 F	6.03	2.06	
5 1/2 F	6.63	2.38	



Notes:

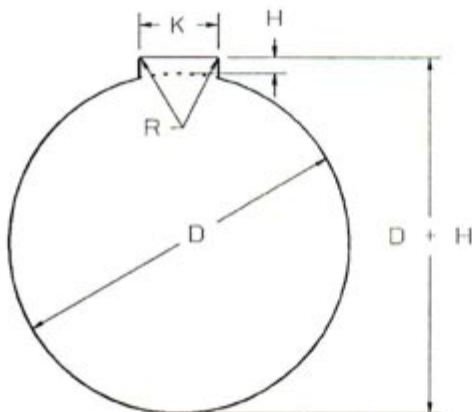
- 1) Unless specified by the customer:
 - Series S couplings supplied with clearance fit bores with set screws.
 - Series F couplings supplied with interference fit bores without set screws over the keyways.
 - Series EL couplings supplied with clearance fit bores with set screws.
- 2) Actual shaft fit will vary depending on actual shaft diameters.

- 3) Keyway fillet radius to be specified by customer.
- 4) All dimensions per AGMA 9002-A86 commercial standards. Non standard bores and keyways available upon request.



Standard Metric Bores And Keyways

Bore Dia. (D) Over To/Incl.	Bore Tol.	Keyway		Fillet Radius (R)	Key Size (Ref)
		Width (K)	Depth (H)		
6 8	+ .015 - .000	2 - .006	1.0	.08 +.08 - .00	2 x 2
8 10		3 - .031	1.4		3 x 3
10 12	+ .018 - .000	4	1.8 +.1 - .0	.16 +.09 - .00	4 x 4
12 17		5 - .012	2.3		5 x 5
17 18		6 - .042	2.8	.25 +.15 - .00	6 x 6
18 22	+ .021 - .000	6	2.8		6 x 6
22 30		8 - .015	3.3	.40 +.20 - .00	8 x 7
30 38	+ .025 - .000	10 - .051	3.3		10 x 8
38 44		12	3.3	.70 +.30 - .00	12 x 8
44 50		14 - .018	3.8		14 x 9
50 58	+ .030 - .000	16 - .061	4.3	1.2 +.40 - .00	16 x 10
58 65		18	4.4		18 x 11
65 75		20	4.9 +.2 - .0	2.0 +.50 - .00	20 x 12
75 80		22 - .022	5.4		22 x 14
80 85		22 - .074	5.4	+ .057 - .000	22 x 14
85 95	+ .035 - .000	25	5.4		25 x 14
95 110		28	6.4	+ .063 - .000	28 x 16
110 120		32	7.4		32 x 18
120 130		32	7.4	+ .052 - .000	32 x 18
130 150	+ .040 - .000	36 - .026	8.4		36 x 20
150 170		40 - .088	9.4	+ .057 - .000	40 x 22
170 180		45	10.4		45 x 25
180 200	+ .046 - .000	45	10.4	+ .057 - .000	45 x 25
200 230		50	11.4		50 x 28
230 250		56	12.4	+ .052 - .000	56 x 32
250 260	+ .052 - .000	56	12.4 +.3 - .0		56 x 32
260 290		63 - .032	12.4	1.2 +.40 - .00	63 x 32
290 315		70 - .106	14.4		70 x 36
315 330	+ .057 - .000	70	14.4	+ .057 - .000	70 x 36
330 380		80	15.4		80 x 40
380 400		90 - .037	17.4	2.0 +.50 - .00	90 x 45
400 440	+ .063 - .000	90 - .124	17.4		90 x 45
440 500		100	19.5		100 x 50



Notes:

1. Bore tolerances per BS 4500 H7 fit.
2. Keyway width tolerances per BS 4235 P9 fit.
3. Keyway depth and fillet radius per BS 4235.
4. All dimensions are in millimeters.
5. Actual shaft fit will vary depending on actual shaft diameters.



DISTRIBUIDOR MEX (55) 53 63 23 31 MTY (81) 83 54 10 18
 AUTORIZADO QRO (442) 1 95 72 60 ventas@industrialmagza.com



1635 Steves Drive
 South Haven, Michigan 49090
 Phone 616-637-2191 FAX 616-637-8377