



Hydraulic Power Unit 2-Stage Braking



An Altra Industrial Motion Company



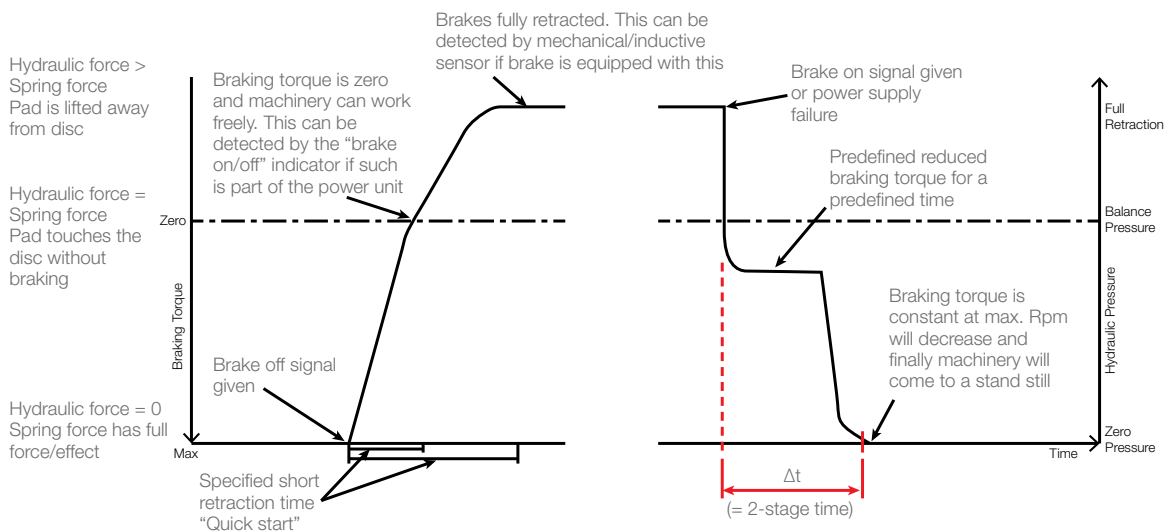
DISTRIBUIDOR AUTORIZADO MEX (55) 53 63 23 31 MTY (81) 83 54 10 18
QRO (442) 1 95 72 60 ventas@industrialmagza.com

WHERE TO USE

The 2-stage hydraulic power unit provide a 2-stage controlled braking sequence for use with hydraulic fail-safe spring applied disc brakes. The 2-stage braking sequence is used to prevent a hard braking sequence, which in worst case can cause too high stress on the mechanical parts, or unwanted wear of the system through uncontrolled braking.

BRAKING PERFORMANCE

During opening of the brakes the pressure is build up and thereby opening the brake(s). The first stage of the braking sequence is dumping the pressure to the correct pressure and after the 2-stage braking time the pressure is smoothly reduced and thereby increasing the braking torque.



FUNCTIONAL DESCRIPTION

Operation (Not Braking)

Electrical power is connected to the electrical motor and the solenoid valve(s) is/are energized. The braking valve(s) is/are closed and block the connection to tank. The hydraulic pressure is built up and disengages the brake and charges the accumulator.

The electrical power is disconnected from the motor by means of the motor pressure switch. The braking valve(s) is/are constantly energized. If the pressure is decreasing to the lower set point for motor pressure switch the motor will restart and increase the pressure again.

Applying the Brake with Controlled Braking Torque

The electrical power is disconnected to the braking valve(s) and motor. The hydraulic oil pressure is released to the tank through the counter pressure valve(s) and the throttle valve(s), resulting in a constant reduced braking torque (MT%).

The reduced braking time is set by the flow control valve by bleeding the oil from the accumulator slowly through the flow control valve, maintaining a constant pressure in the brakes. When the accumulator is fully discharged the pressure in the brake will go to zero, and full braking torque is applied.

The constant brake torque and braking time is pre-set from factory as specified or if not specified set to 50% (MT%) of maximum torque and approximately 10sec stopping time (Δt).

Operation in Case of Power Failure

In case of power failure the brakes will be applied as described in the section: Applying the brake with controlled braking torque.



FEATURES

The hydraulic power unit is available in two versions; a basic (single dump) and a premium (dual dump) with cabinet / enclosure with various options and accessories.

The junction box / terminal box is mounted internally in the upper left hand side. Cable entry is in left hand side with removable entry plate in brass. The cabinet door is hinged either left hand or right hand side. The pressure connection / bulkhead (JIC as standard / Ermeto fitting 10L as optional) is mounted in left hand side but can be mounted in the right hand side or in the bottom as well.

2-Stage Braking Special Features

- Single return line / dump (Basic) or Dual return lines / dump for redundancy (Premium)
- Counter pressure valve(s) and throttle valve(s)
- Equipped with hand pump for manual release of brake
- Inline high pressure filter
- LED's on solenoids
- Test point for readout / bleeding of manifold
- Pressure switch either electronic or mechanical type
- Level & temperature switch in tank
- Pressure gauge mounted on test point (minimess) hose inside cabinet
- Stainless steel enclosure mounted on bracket with vibration dampers
- Enclosure door with cam lock with double bit as standard or upgraded with stainless pad-lockable swing handle (optional)
- Removable drip tray to capture spills
- HPU can be mounted on slides for easy maintenance (optional)
- Sun roof / dirt cover 30° (optional)

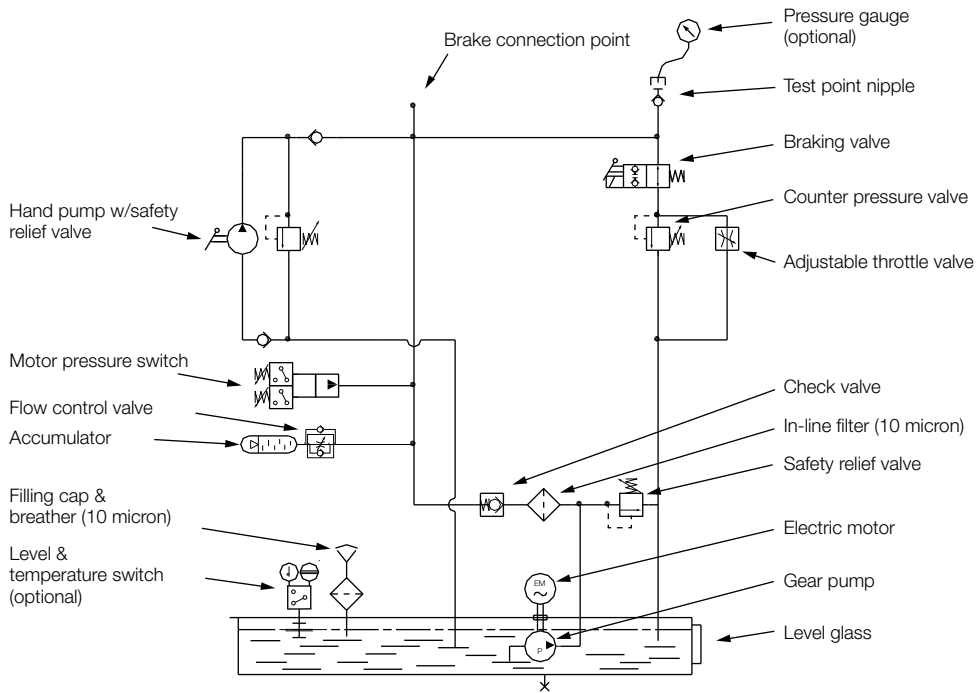


HYDRAULIC DIAGRAM

The schematics illustrates the difference between basic (single return) & premium (double return). The additional circuit on the premium version is marked with red in the below image.

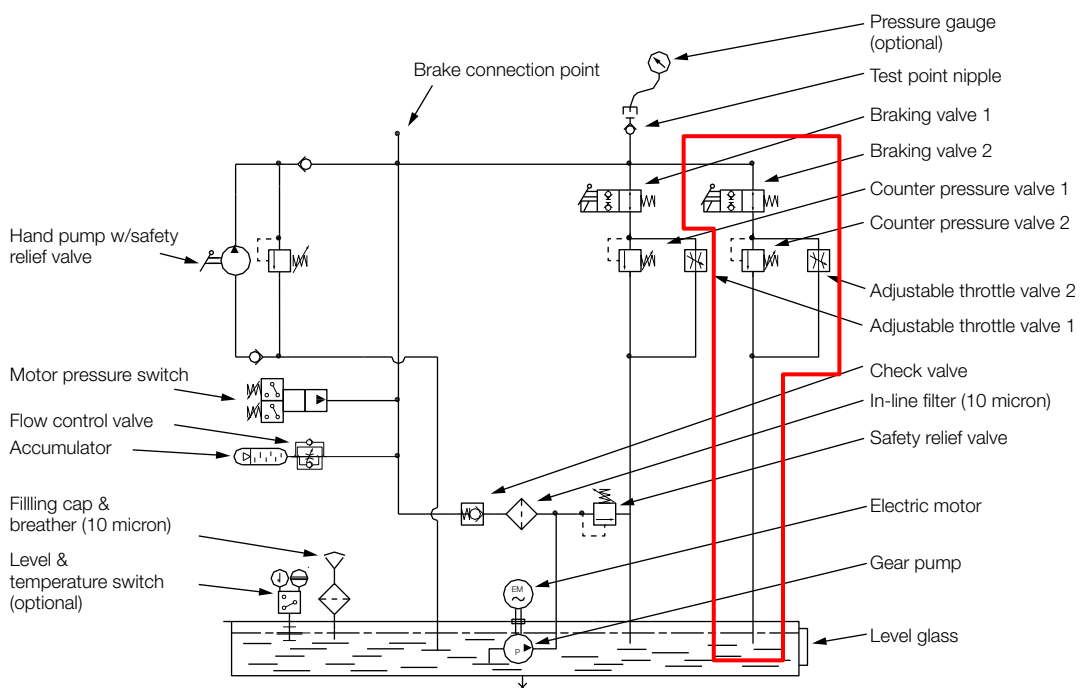
The motor pressure switch can either be mechanical type (2 switches) or electronic type (IFM) (1 switch) – here shown as electronic type.

Basic Version: Single Dump / Single Return Line



Premium Version: Double Dump / Dual Return Line

Red area indicates additional circuit for redundant return/dump



ELECTRICAL DIAGRAM / SCHEMATIC

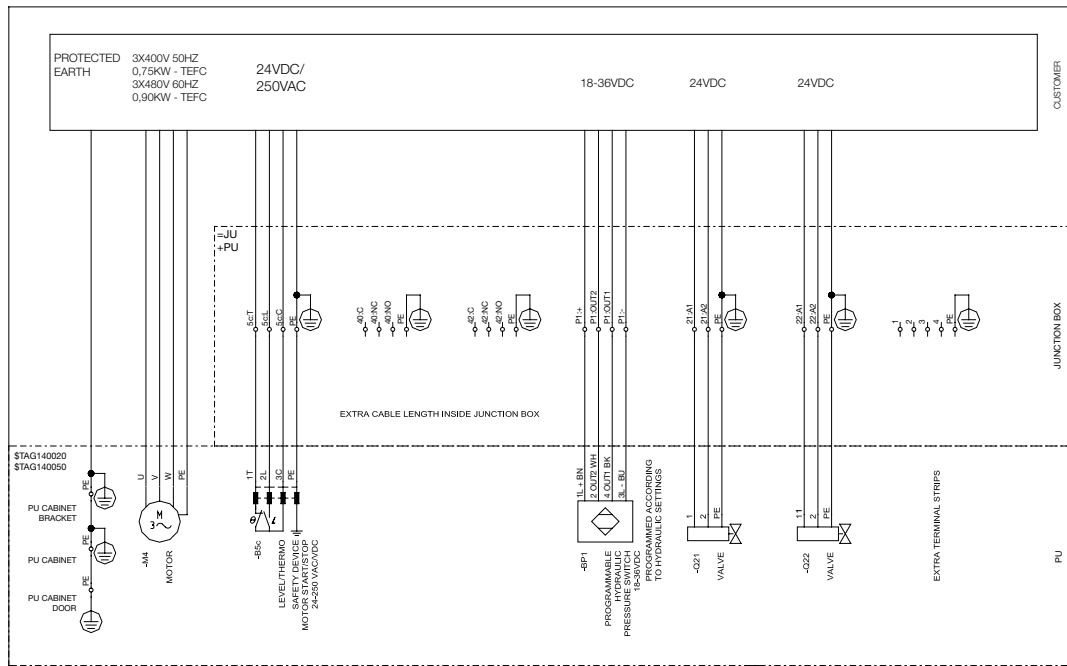
The electrical components on the hydraulic power unit – excluding the motor - are prewired to the junction box.

The motor supply wire and motor starter is not part of the unit and must be provided locally.

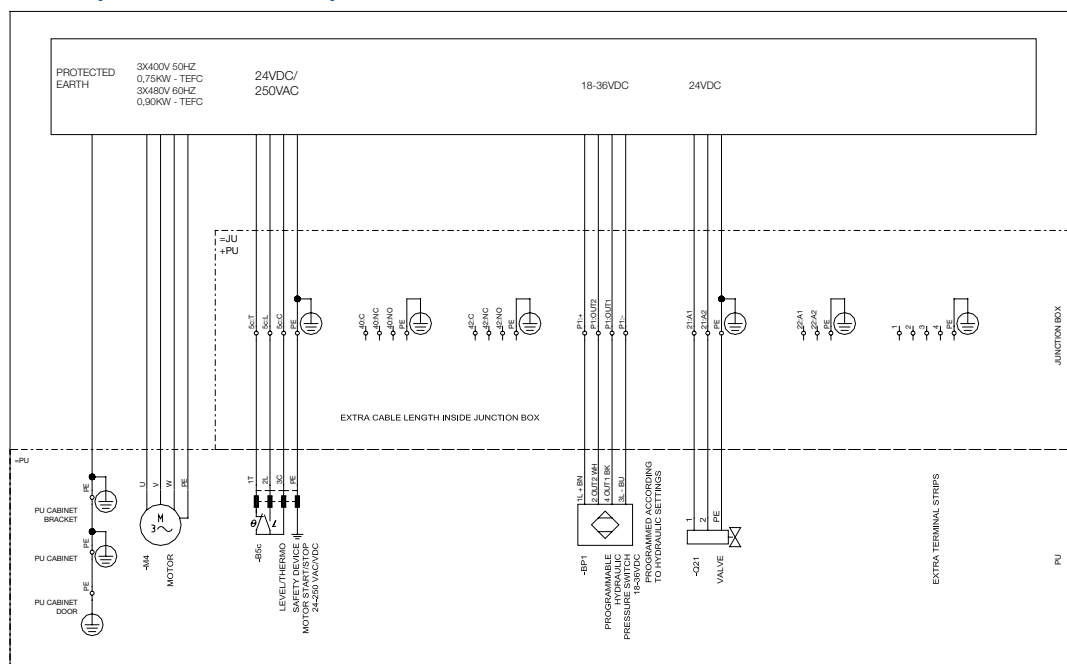
The connection from installation to junction box and motor is to be made through the removable brass entry plate in the left hand side and must be made during installation. It is not normal to connect the brake indicators through the junction box on the unit.

The electrical diagram / schematic vary according to the selections made (basic / premium / mechanical or electronic pressure switch) – below two typical schematics

Premium Version (Redundant Valves) with IFM Pressure Switch:



Premium Version (Redundant Valves) with Mechanical Pressure Switch:



Component List (Quantities depend on configuration)

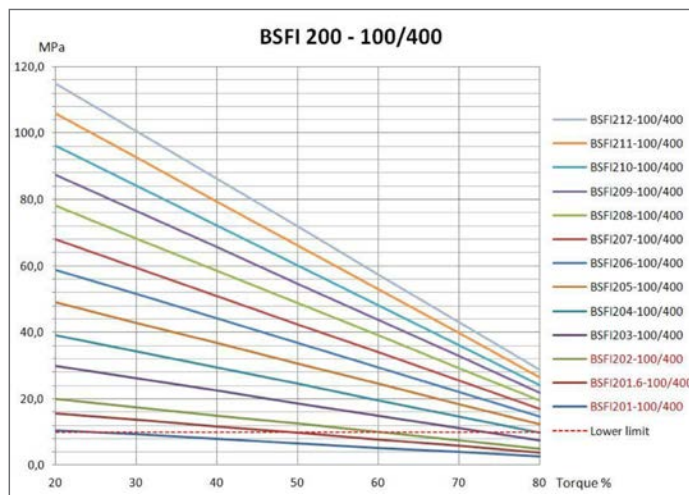
Valves / Coil	Directional poppet valve 2/2 & coil 21W (1x or 2x) - Hydac	
Pressure switch	Electronic sensor (1x) – IFM 7001 Mechanical pressure switch (2x) - Bosch Rexroth HED5	
Level & temperature switch	Level indicator with temperature switch 70°C - Lund & Sorensen	
Motor	IEC common motor 0,75kW for 50Hz / 0,90kW for 60Hz	
Terminals (in JB)	Screw terminals - Wago	
Wire colors	IEC Power circuit wiring colors Protective earth (PE) Green-yellow Neutral (N) Blue Line, single phase (L) Brown Line, 3 phase (L1) Brown Line, 3 phase (L2) Black Line, 3 phase (L3) Grey	

Recommended Brake Limits for 2 Stage Pressures

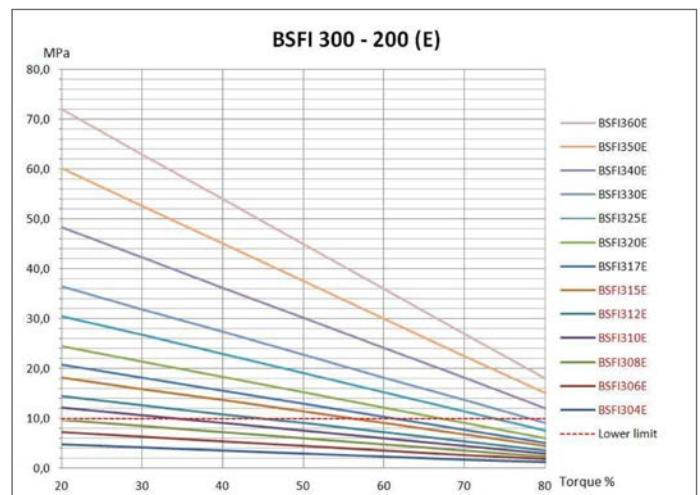
Choosing brake torques and brake sizes that result in a hydraulic two stage pressure lower than 10bar (lower limit) is not recommended as the counter pressure valve is very difficult to set at this low pressure.

The brake pressure curves indicate the two stage pressure at the corresponding torque. If pressure is below the 'lower limit' the combination is not recommended.

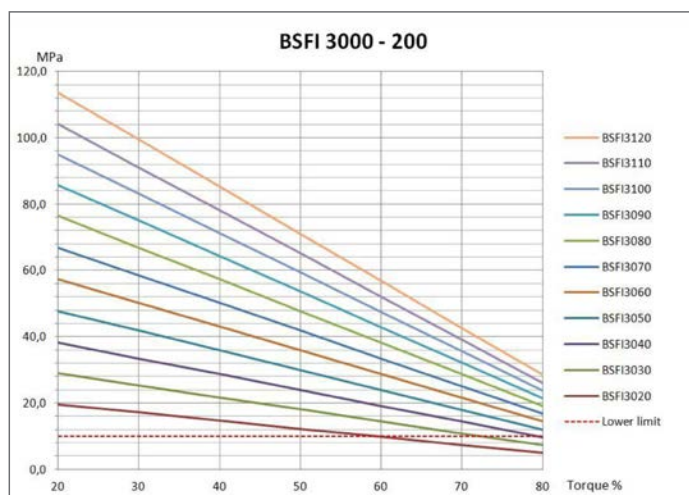
BSFI 200 Series:



BSFI 300 Series:

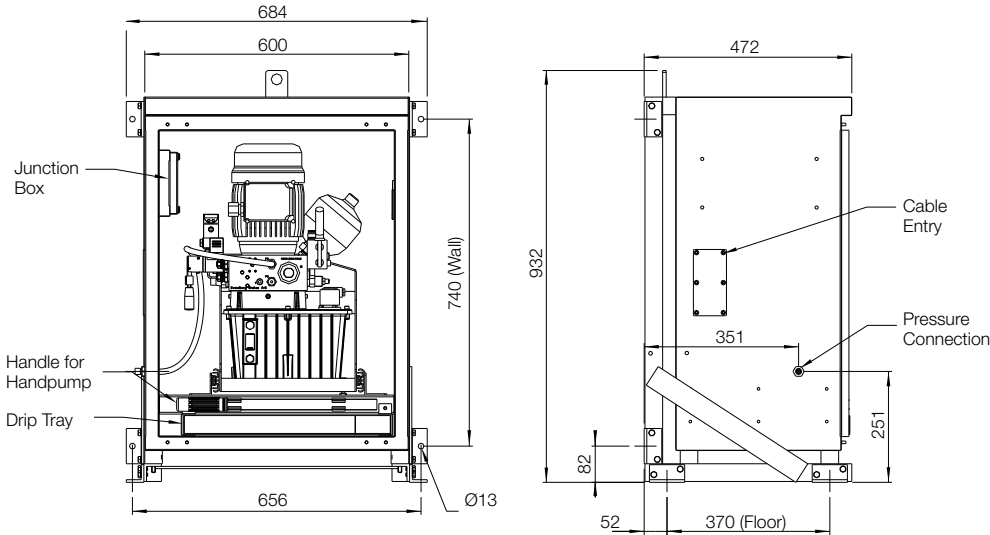


BSFI 3000 Series:



SELECTION SHEET – 2 STAGE HYDRAULIC POWER UNIT

Dimensions (600x800x400mm) (WxHxD)



Technical Specifications

Motor standard
IEC – TEFC (fan cooled)
IEC – TENV (non ventilated)

Available motor voltages
AC 50Hz / 60 Hz
1 x 230V
3 x 400V / 480V
3 x 500V / 575V
3 x 690V / 690V

All AC motors have voltage tolerance ± 10%
Power consumption:
0.75kW (50Hz)
0.90kW (60Hz)

Available Coil Voltages
DC: 12V, 24V, 48V, 110V
AC: 110V, 230V

Power consumption: 19W (one coil)

Oil Tank Size
6 liter / 1.58 gallon (US) /
1.32 gallon (imperial)

Hand Pump
Inclusive

Pressure Switch
Electronic or Mechanical

Cabinet / Enclosure
Stainless steel (1.4305 /
AISI 304) incl. junction box

Protection class IP66
Protection class for electrical
components IP55

Internal wiring according to
IEC EN 60204-1

Mounted on suspension bracket with
dampers and lifting point.
Drip tray to take spills.
Slides for easy maintenance (optional).

Ambient Temperature Limits
-20°C to +50°C /
-4°F to +122°F
The hydraulic fluid must match
temperature level

Altitude
Below 1000 MASL

Weight
Approx.: 100kg / 220lb
(without oil)

HPU Selection Sheet

Version (select one) Premium (dual return) Basic (single return)		Accessories (select one) Unit mounted on slides (default) Unit fixed on bracket	
Motor (AC 50 Hz/60Hz) TEFC =Fan cooled TENC = Non Ventilated	(Select one) TENV TEFC	Door mounting (select one) Left side mounted (default) Right side mounted	
1x230V 50 Hz / 1x230V 60 Hz	–	Cabinet accesories Cam lock with double bit (default) Pad-Lockable swing handle	
3x400V 50 Hz / 3x480V 60 Hz	–	Flat cabinet (no sun roof)(default) Dust cover / sun roof 30°	
3x500V 50 Hz / 3x575V 60 Hz	–	Pressure connection entry (select one) Left side mounted (default) Right side mounted Bottom (left) mounted	
3x690V 50 Hz / 6x690V 60 Hz	–	Pressure switch (select one) Electrical (IFM) (Port P1) Mechanical (Port 40 & 42)	
Coil voltage (select one)	AC DC	Pressure connection type (select one) JIC connection (default) Ermeto connection (10L)	
12 VDC	–	Hydraulic / brake parameters: Brake series / size: _____ Type of brake (Mono / Dual) _____ Number of brakes: _____ pcs Braking torque M_T % (30-70%):(% of 100% torque) _____ % Braking time Δt (5-25sec): (2-stage time) _____ Sec Standard (if no values given): M_T % =50% & Δt =10 sec	
24 VDC	–		
48 VAC / VDC	–		
110 VAC	–		
230 VAC	–		
Pressure switch (select one)			
Customer Name / Project:			
Other Information:			
Name & Date:			

<p>Belted Drives and Sheaves</p> <p>TB Wood's <i>Belted Drives</i> Chambersburg, PA - USA 1-888-829-6637 – Press #5 <i>For application assistance:</i> 1-888-829-6637 – Press #7</p>	<p>Couplings Cont.</p> <p>Lamiflex Couplings <i>Flexible Couplings, Bearing Isolators, and Coupling Guards</i> Cotia, SP - Brasil +55 (11) 4615-6300</p>	<p>Engineered Bearing Assemblies</p> <p>Kilian Manufacturing <i>Engineered Bearing Assemblies</i> Syracuse, NY - USA 1-315-432-0700</p>	<p>Heavy Duty Clutches and Brakes Cont.</p> <p>Wichita Clutch <i>Pneumatic Clutches and Brakes</i> Wichita Falls, TX - USA 1-800-964-3262 Bedford, England +44 (0) 1234 350311</p>
<p>Couplings</p> <p>Ameridrives Couplings <i>Mill Spindles, Ameriflex, Ameridisc</i> Erie, PA - USA 1-814-480-5000 <i>Gear Couplings</i> San Marcos, TX - USA 1-800-458-0887</p>	<p>TB Wood's <i>Elastomeric Couplings</i> Chambersburg, PA - USA 1-888-829-6637 – Press #5 <i>For application assistance:</i> 1-888-829-6637 – Press #7 <i>General Purpose Disc Couplings</i> San Marcos, TX - USA 1-888-449-9439</p>	<p>Gearing</p> <p>Bauer Gear Motor <i>Geared Motors</i> Esslingen, Germany +49 (711) 3518-0 Somerset, NJ - USA 1-732-469-8770</p>	<p>Linear Products</p> <p>Warner Linear <i>Linear Actuators</i> Belvidere, IL - USA 1-800-825-6544 <i>For application assistance:</i> 1-800-825-9050 Saint Barthélemy d'Anjou, France +33 (0)2 41 21 24 24</p>
<p>Ameridrives Power Transmission <i>Universal Joints, Drive Shafts, Mill Gear Couplings</i> Green Bay, WI - USA 1-920-593-2444</p>	<p>Electromagnetic Clutches and Brakes</p> <p>Inertia Dynamics <i>Spring Set Brakes; Power On and Wrap Spring Clutch/Brakes</i> New Hartford, CT - USA 1-800-800-6445</p>	<p>Boston Gear <i>Enclosed and Open Gearing, Electrical and Mechanical P.T. Components</i> Charlotte, NC - USA 1-800-825-6544 <i>For application assistance:</i> 1-800-816-5608</p>	<p>Overrunning Clutches</p>
<p>Bibby Turboflex <i>Disc, Gear, Grid Couplings, Overload Clutches</i> Dewsbury, England +44 (0) 1924 460801 Boksburg, South Africa +27(0) 11 918 4270</p>	<p>Matrix International <i>Electromagnetic Clutches and Brakes, Pressure Operated Clutches and Brakes</i> Brechin, Scotland +44 (0) 1356 602000 New Hartford, CT - USA 1-800-825-6544</p>	<p>Nuttall Gear and Delroyd Worm Gear <i>Worm Gear and Helical Speed Reducers</i> Niagara Falls, NY - USA 1-716-298-4100</p>	<p>Formsprag Clutch <i>Overrunning Clutches and Holdbacks</i> Warren, MI - USA 1-800-348-0881 – Press #1 <i>For application assistance:</i> 1-800-348-0881 – Press #2</p>
<p>Guardian Couplings <i>Engineered Flywheel Couplings, Engine Housings and Pump Mounts, Flexible Shaft Couplings</i> Michigan City, IN - USA 1-219-874-5248</p>	<p>Warner Electric <i>Electromagnetic Clutches and Brakes</i> New Hartford, CT - USA 1-800-825-6544 <i>For application assistance:</i> 1-800-825-9050 Saint Barthélemy d'Anjou, France +33 (0)2 41 21 24 24 <i>Precision Electric Coils and Electromagnetic Clutches and Brakes</i> Columbia City, IN - USA 1-260-244-6183</p>	<p>Heavy Duty Clutches and Brakes</p> <p>Industrial Clutch <i>Pneumatic and Oil Immersed Clutches and Brakes</i> Waukesha, WI - USA 1-262-547-3357</p>	<p>Marland Clutch <i>Roller Ramp and Sprag Type Overrunning Clutches and Backstops</i> South Beloit, IL - USA 1-800-216-3515</p>
<p>Huco Dynatork <i>Precision Couplings and Air Motors</i> Hertford, England +44 (0) 1992 501900 Chambersburg, PA - USA 1-888-829-6637</p>		<p>Svendborg Brakes <i>Industrial Brakes and Brake Systems</i> Vejstrup, Denmark +45 63 255 255</p> <p>Twiflex Limited <i>Caliper Brakes and Thrusters</i> Wichita Falls, TX - USA 1-844-723-3483 Twickenham, England +44 (0) 20 8894 1161</p>	<p>Stieber Clutch <i>Overrunning Clutches and Holdbacks</i> Heidelberg, Germany +49 (0) 6221-30470</p> <p><small>For information concerning our sales offices in Asia Pacific check our website www.altramotion.com.cn</small></p>



www.svendborg-brakes.com

Jernbanevej 9
DK-5882 Vejstrup - Denmark
+45 63 255 255
Fax: +45 62 281 058
sb@svendborg-brakes.com

Svendborg Brakes GLOBAL REPRESENTATIONS

DENMARK	<i>Svendborg Brakes ApS</i>	+45 63 255 255
GERMANY	<i>Svendborg Brakes ApS</i>	+49 5422 9272 00
CHINA	<i>Svendborg Brakes Shanghai Co., Ltd.</i>	+86 21 60580600
USA	<i>Svendborg Brakes, USA LLC</i>	+1 (303) 285 1271
	<i>Aftermarket Wind, USA, C. Andersen</i>	+1 (312) 705 3814
	<i>Aftermarket Wind, USA, G. Taverna</i>	+1 (312) 720 0301
AUSTRALIA	<i>Svendborg Brakes Australia Pty., Ltd.</i>	+61 (0) 8 94 160300
KOREA	<i>Svendborg Brakes, Korea Co., Ltd.</i>	+82 10 9703 0979
SOUTH AFRICA	<i>Svendborg Brakes S.A.</i>	+27 11 964 1101/2/3
CHILE	<i>Svendborg Brakes Chile</i>	+56 9 5629 5291
SPAIN	<i>Svendborg Brakes ES</i>	+34 (975) 2336 55